



1. .... 1  
 2. .... 2  
 3. .... 4  
 4. .... 5  
 5. / ..... 7  
 6. .... 9  
 7. .... 10  
 8. .... 14  
 9. .... 16

**1.**

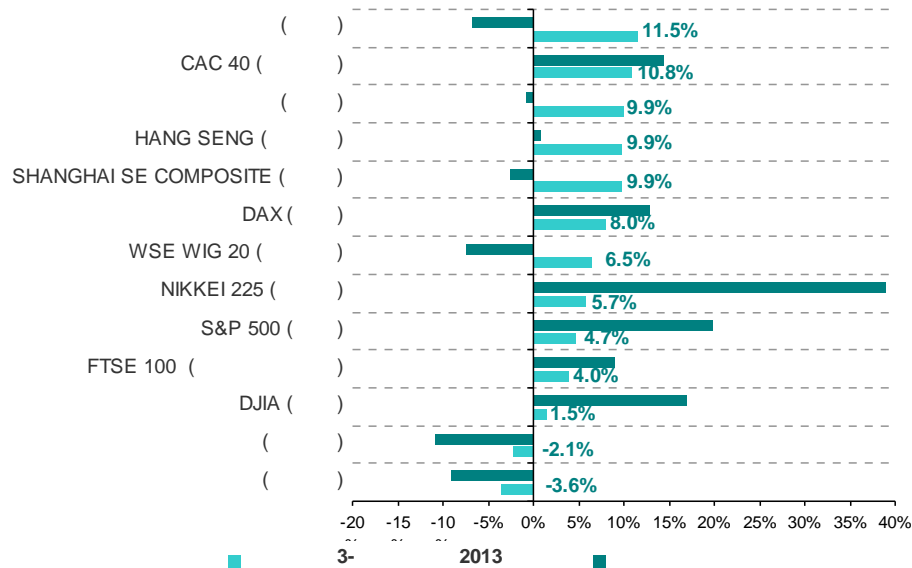
3- 2013

« » (QE),  
 +1.5%/4.7% +4.0% +10.8%  
 - 0.9% (+5.7%). 2013  
 63.0% (+9.9-11.5%),  
 (+6.5%). ( . 1, . 1).

3 . 2013 . \*

	30.06.2013	30.09.2013	3-2013		
( )	1 275.44	1 422.49	11.53%	-2.45%	-6.84%
CAC 40 ( )	3 738.91	4 143.44	10.82%	23.51%	14.45%
( )	1 330.46	1 462.82	9.95%	-0.87%	-0.81%
HANG SENG ( )	20 803.29	22 859.86	9.89%	9.69%	0.85%
SHANGHAI SE COMPOSITE ( )	1 979.21	2 174.67	9.88%	4.24%	-2.62%
DAX ( )	7 959.22	8 594.40	7.98%	19.10%	12.90%
WSE WIG 20 ( )	2 245.64	2 391.53	6.50%	0.85%	-7.41%
NIKKEI 225 ( )	13 677.32	14 455.80	5.69%	62.97%	39.06%
S&P 500 ( )	1 606.28	1 681.55	4.69%	16.72%	19.90%
FTSE 100 ( )	6 215.47	6 462.22	3.97%	12.54%	9.06%
DJIA ( )	14 909.60	15 129.67	1.48%	12.60%	16.94%
( )	866.47	847.90	-2.14%	-15.87%	-10.80%
( )	309.78	298.55	-3.63%	-19.20%	-9.17%

\* Bloomberg



. 1. 3 . 2013 .

3-

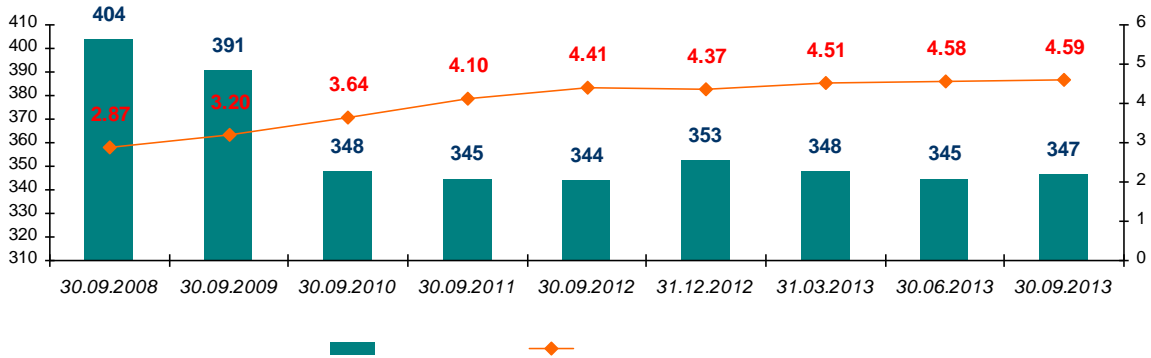
« » : - 2.1%,  
 - 3.6%. 2013 -15.9% ( ) -19.2% ( ).  
 52.91 . ., 49.8% ( +21.2 . ., +27.2% 2- ),  
 159.19 . . ( ; -153.75 . .).  
 (71.6%, )  
 42.7%  
 114.00 . . - 155.7%,  
 22.85 . . -  
 34.2% (14.15 . .). 3- ( 0.02  
 2.29 . .), ( 2.21 5.36 . .), ( 21.25 50.62 . .),  
 ( 74.79 93 24 . .),  
 12.5% (+0.15 . .), - 250.0% (+2.93 . .).  
 (-30.5%, 3.19 2.22 . . ; -22.9%, 2.41  
 1.89 . . - )  
 62.6% (-0.82 . .).

**2.**

3- 2013  
 (+2 -3 2- -5 1- ).  
 , 30.09.2013 347 , 6 ,  
 ( . 2).  
 - 1593 (+13 3- ,  
 +49 ). , 2- (+10 ),



1- (+26). : 30.09.2013  
 4.59 ( 4.58 30.06.2013, 4.37 ).



2. 3 . 2008-2013 .

4- 2012 , (+35) 30.09.2013 1239 , 3- ,  
 , , (+36), (+22) ( . 2).  
 , , (+2). 1-  
 , (-2). « » .  
 30.09.2013, , 7 , 4  
 , 4 , 16 , 24 3 .  
 2.

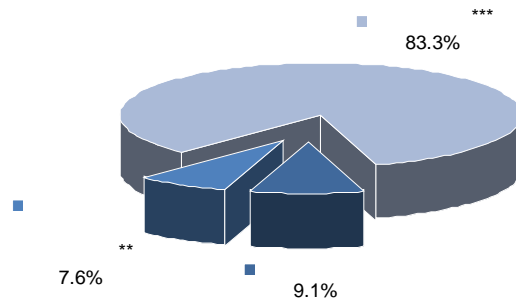
3 . 2013

		*	*	*	*	*	*	*	*
30.09.2012	1200	41	39	13	46	817	2	118	124
31.12.2012	1222	41	38	13	45	829	2	110	144
31.03.2013	1213	42	38	11	48	826	1	108	139
30.06.2013	1204	42	37	11	47	828	2	100	137
30.09.2013	1239	42	36	11	49	850	2	98	151
3- 2013	35	0	-1	0	2	22	0	-2	14
	2.9%	0.0%	-2.7%	0.0%	4.3%	2.7%	0.0%	-2.0%	10.2%
	17	1	-2	-2	4	21	0	-12	7
	1.4%	2.4%	-5.3%	-15.4%	8.9%	2.5%	0.0%	-10.9%	4.9%
	39	1	-3	-2	3	33	0	-20	27
	3.3%	2.4%	-7.7%	-15.4%	6.5%	4.0%	0.0%	-16.9%	21.8%

9 2013 « » 17,  
 21, - 12 .  
 , 30.09.2013 - 96 120 2-  
 (97 31.12.2012), ( 120 2- ).  
 116 2- 115 2013 95 3- .



16  
 (46% ), 11 (34%) – , 24 (19%) – , 44 (5%) –  
 3-  
 66 ( 75 30.06.2013, 77 31.12.2012).  
 (6),  
 – 3 (5), « », ,  
 , – 4 (55).  
 3- . ( . 3).



. 3.

30.09.2013

### 3.

345 347  
 5 (245 ), , 4  
 2 ( . 4).



. 4.

30.09.2013 .

69.6% 2- 70.6% 3- .

1 . « ( ) - » : <http://www.uaib.com.ua>.





(3- 2013 )

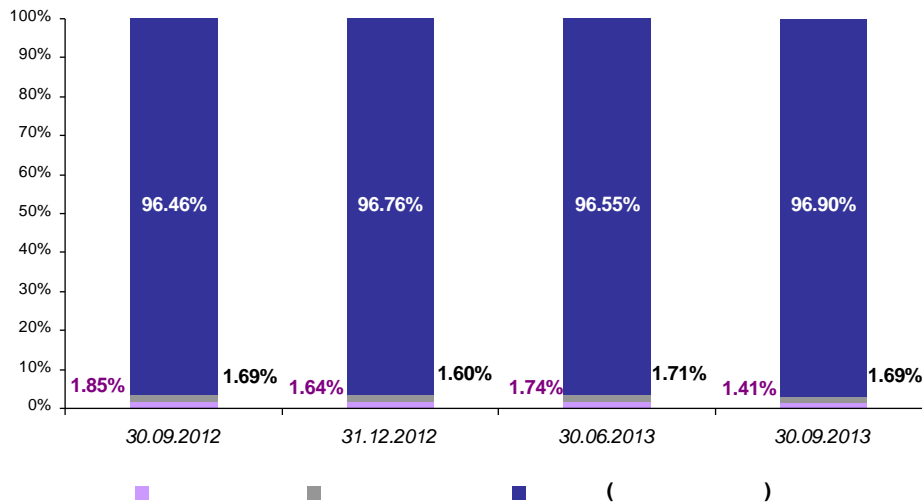
30.09.2013 171 860.06 . .  
 - +7 807.67 . . (+4.76%) -  
 8 114.63 . . (+5.25%) 162 657.37 . .  
 2013 14 658.93 . . (+9.32%).  
 3- , 2- , ,  
 , , ,  
 300 . .  
 30.09.2013 153 660.65 . .,  
 (+8 072.29 . . , +5.54%) ( . 3).  
 3- 145 233.93 . .  
 (+8 078.11 . . , +5.89%). , 5.88% ( 2  
 ), 1.38%, 1.99 . . , 141.99 . .  
 , 12.5% (-5 ) , 18.96%, 27.87 . .  
 , 119.15 . . ,  
 1.61%, 0.30%, 24.04 . . ,  
 8 165.58 . .  
 2013 14 400.07 . . (+10.34%).

3.

3 . 2012-2013 . . .

	30.09.2012	31.12.2012	30.06.2013	30.09.2013	3-2013		
	179.72	160.54	147.02	119.15	-18.96%	-33.71%	-25.79%
	164.86	156.00	143.98	141.99	-1.38%	-13.87%	-8.98%
( )	9 387.73	9 445.63	8 141.54	8 165.58	0.30%	-13.02%	-13.55%
( )	9 732.31	9 762.16	8 432.54	8 426.72	-0.07%	-13.42%	-13.68%
	116 971.44	129 498.42	137 155.82	145 233.93	5.89%	24.16%	12.15%
( )	126 703.75	139 260.58	145 588.36	153 660.65	5.54%	21.28%	10.34%

30.09.2013  
 1.4% ( 1.7% 2- 1.6% 2013 ) ( . 7).  
 , , 3- 96.9% ( 96.6% 2- 96.8%  
 , - 1.7%.  
 2013 ).

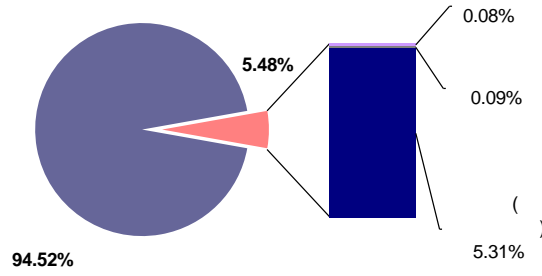


. 7.

3 . 2012-2013 .



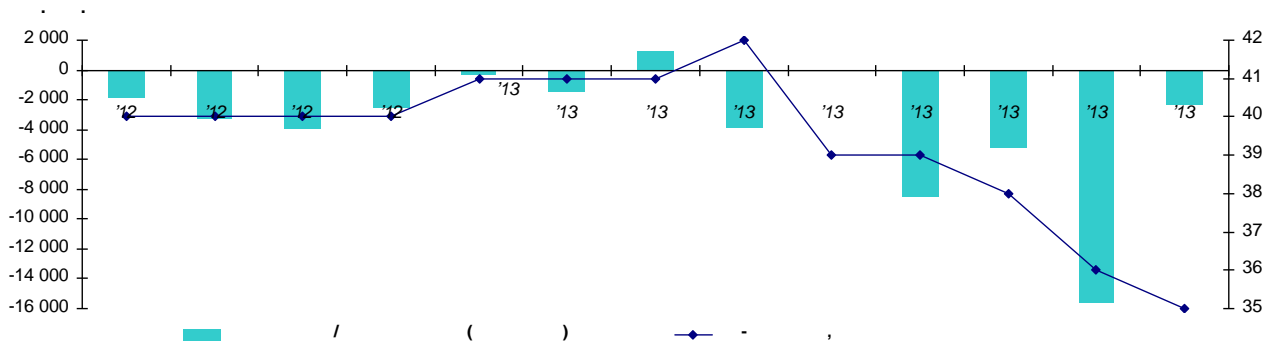
3- 94.2% 94.5% ( .8). 9 2013 1.5 . .



. 8. 30.09.2013 .

**5. /**

2- , 3- . 21  
 - 15.6 . . -  
 2011 , .  
 2012 ( .9, .4).  
 84%, - 31%  
 2-3 ( 4-9  
 0.2 . . ( 1.26 . . 2- ).  
 3- , - 13-18  
 13-21 .



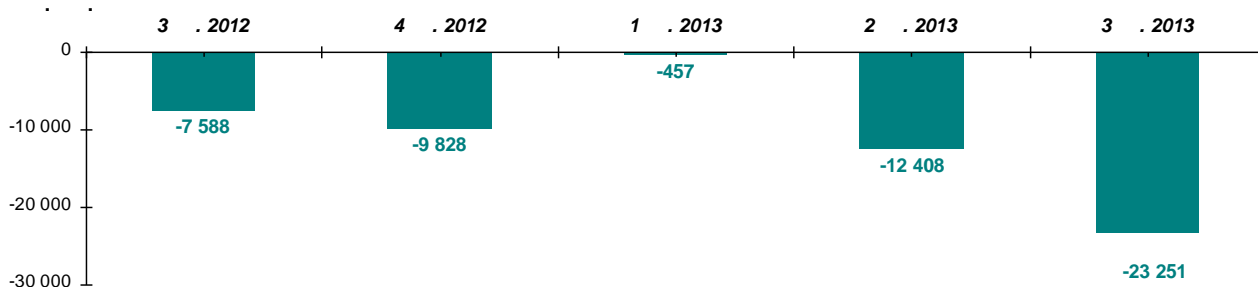
.9. / ( ) - , 2012-2013 \*



	2012-2013	*
'12	-1 873	40
'12	-3 333	40
'12	-3 963	40
'12	-2 532	40
'13	-363	41
'13	-1 392	41
'13	1 297	41
'13	-3 870	42
'13	-70	39
'13	-8 467	39
'13	-5 268	38
'13	-15 623	36
'13	-2 360	35

\*

1- . 2012 – 26 . .).  
 2013  
 5 2013 ( . 10), 23 . .,  
 36 . ., – 46 . .,  
 52%, ( -30.28 . .).  
 3- . .,  
 83% ( 107% 2- . ).  
 78% 76%.



. 10. / 3 . 2012-2013 .  
 3- 2013

(30 . .),  
 , 3- . . ,  
 (15 . .).  
 12 . . ,  
 12 . . 2- .  
 (-9 . .),  
 2011  
 20 . .  
 UCITS 34 . . 3- . ,

<sup>2</sup> . [EFAMA European Quarterly Statistical Release Q3 2013](#), [Quarterly Statistical Report Q3 2013](#)





**6.**

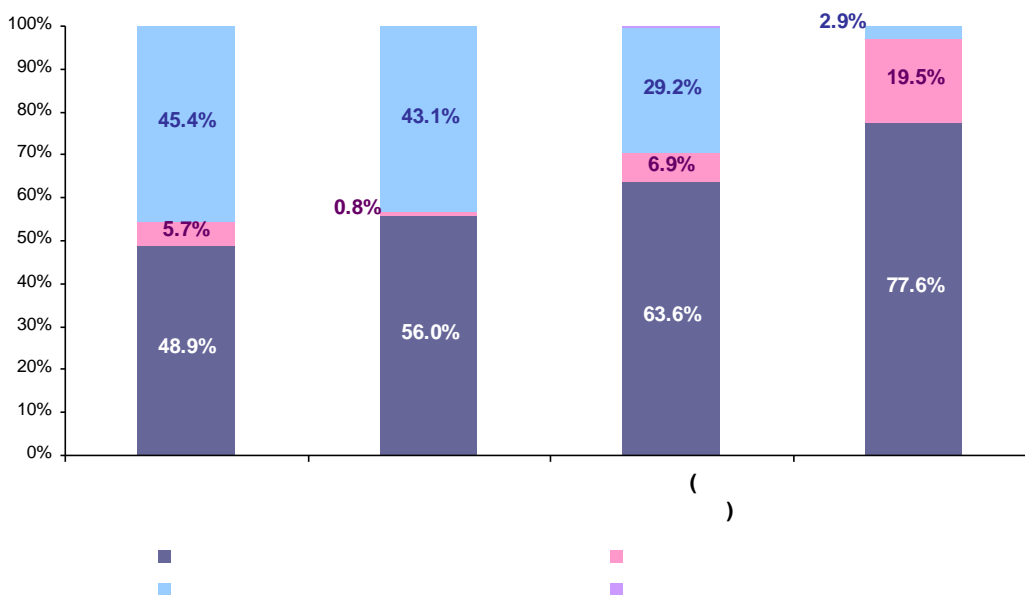
78.5% 76.8%, 3- 2 355.34 2013 (80.0%).  
 -4 711.43 1- ), +7 629.53 2-  
 - 3 337.70 18.8% ( 17.4% 2- ).  
 +687.42 4.4%, - +545.33 2.9%,  
 - +164.83 29.2%.  
 3- ( .5, .11).

5.

30.09.2013 ..

	48.89%	5.67%	45.38%	0.06%
	56.04%	0.76%	43.11%	0.08%
( )	63.64%	6.93%	29.16%	0.26%
( )	<b>63.31%</b>	<b>6.81%</b>	<b>29.63%</b>	<b>0.26%</b>
	77.55%	19.51%	2.87%	0.07%
( )	<b>76.76%</b>	<b>18.81%</b>	<b>4.35%</b>	<b>0.08%</b>

3- (-49.53 .., 63.3%, -136.58 .., 6.8%, ).  
 142.09 .., 27.8% 29.6%,  
 5.31 .., 0.19% 0.26%.



. 11.

30.09.2013 ..



(3- 2013 )

3- 2013  
 (-21.17 . . . .),  
 (-4.53 . . . .)  
 42.7% 48.9% ( 2013  
 42.5%). 51.2% 45.4%  
 ( 46.4%). 2-  
 50%  
 (-1.91 . . . .), 2.5  
 6.1% 5.7% ( -11.0%). 2-  
 2- - 1.57 . . . . 43.6%  
 43.1% ( 2013 44.6%).  
 3- - 55.6% 56.0% ( - 54.5%).  
 0.8% ( 0.9%).  
 (-44.60 . . . .), (-134.64 . . . .).  
 164.83 . . . .,  
 - 5.57 . . . .  
 64.1% 63.6% ( 69.9%), - 8.6% 6.9%  
 - 27.1% 29.2% ( - 23.1%).  
 5.57 . . . .  
 (0.26% 0.20% 2- 0.14% ).  
 3- 2013  
 (+3 474.27 . . . .), (+2 404.86 . . . .).  
 545.33 . . . . - 49.01 . . . .  
 79.5% 77.6% ( 80.8%).  
 (17.9% 19.5% 2- 16.8% . . . .).  
 - 2.6% 2.9% ( - 2.4%).

**7.**

3- 2013  
 - 52.0%  
 47.7% ( 6- . . . .), 54.6% 51.3% 75.4%  
 74.5% ( . 12).  
 - 4.74 . . . ., - 1.61 . . . ., - 155.76 . . . .).  
 ( . . . . - 6.47 . . . .).

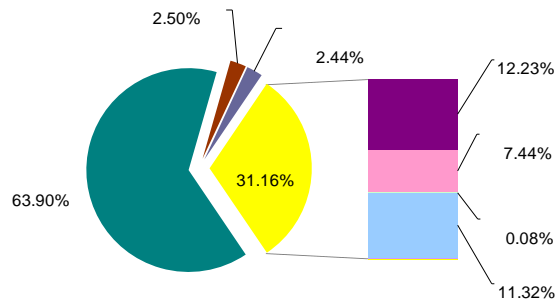




- - 8.3% 6.3%;
- « » - 8.1% 8.7%;
- - 16.0% 16.3%;
- - 65.7% 65.9%;
- - 8.3% 7.3%;
- ( )
- « » - 35.8% 37.5%;
- - 8.6% 10.2%;
- - 38.9% 39.3%;
- - 1.0% 1.2%;
- - 8.2% 5.6%;
- - 6.5% 5.1%.

3- 2013  
 - (+2 627.68 . . .), (+1 370.50 . . .)  
 (+1 873.45 . . .). 1.3 . . ., 31.2%.  
 (-570.83 . . .),  
 (-19.42 . . .), (-3.55 . . .).  
 « » (+5 316.60 . . .),

1.2 . . . 63.9% ( . 13).



. 13. 30.09.2013 .

2- :

- - 11.4% 12.2%;
- - 10.9% 11.3%;
- - 7.1% 7.4%;
- « » - 65.0% 63.9%;
- - 0.5% 0.1%.



3- 2013

41.5% 42.4%, - 2 465.45

( +582.29 2- ) 23 516.61 ( . 6).

2 093.67

- 1 607.59 18 908.00

(34.1%). 124.00

1 208.39 12 570.41

22.4% 22.7%.

1 618.91

(-10.68 . .) (-569.58 . .):

90%, - 82%.

2013

3- 125.54

- 42.40 . ., +6.16

2- 0.02% 0.09% 2013

46.63

3- -

4 732.94 . . ( -2 055 . . ) 55 424.56 . . 2013

3 808.69

6.

30.09.2013 .

	23 516 610 537	42.43%
i	18 908 007 818	34.11%
	12 570 408 998	22.68%
	136 280 678	0.25%
	125 535 348	0.23%
	107 456 051	0.19%
	51 287 209	0.093%
	7 818 450	0.014%
	1 151 488	0.002%
	<b>55 424 556 578</b>	<b>100.00%</b>

( ) 3-

(-589.83 . .).

(-265.87 . .), (-162.23 . .)

(-162.11 . .).

73.7% 76.5% - 11.9% 10.6% 11.1%

10.1% ( . 7).

(-7.13 . .) - 86%.

2013 1 841.53

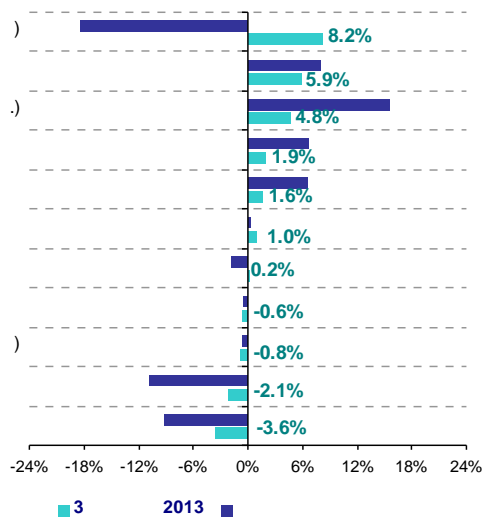


30.09.2013

	3 632 748 585	76.53%
	503 189 194	10.60%
	476 900 290	10.05%
	131 616 632	2.77%
	1 257 092	0.03%
	1 151 488	0.02%
	<b>4 746 863 281</b>	<b>100.00%</b>

**8.**

3- 2013 2.1-3.6%.  
 80%, 21% 66%  
 36% - 10%  
 2- 3-  
 (+1.6% -1.3% 2- ),  
 (+1.9%)<sup>4</sup>.  
 (+1.0% -3.2% 2- ), +0.2% ( -1.8%).  
 2013 -1.8% -  
 +0.3%,  
 +6.5% ( . 14).



. 14.

3 . 2013 .

4  
 5  
 2013 40- , 33- ( , 130- - . 34- , 32- , 122- 2- .  
 : <http://www.domik.net>, <http://100realty.ua>, <http://realt.ua>.



3- , - , - , : -13.8%

+9.3% ( 2- - -36% +15%). -

, , 19 34- ( 15- 40- 2- ),

(+4.8%) ( , 2- ). (+8.2%), -

-8.4% +39.1% ( 2-

- -21% +12%),

, , 18 32-

3- 2013 ( 12- 33- 2- ),

3 - , 2-

- -49.4% +54.9% ( -76% +26% 2- ).

44 122- ( 39- 130- 2-

), 17 - ( 8- 2- )

12 -

(+22.0%), -

(-22.6%). 15.9-19.2%,

-6.22% ( ) +6.1% ( ).

(

+5.4% ( ) -1.2% 2- ) ( . 15).

(+39.1%),

(-1.3%), 2-3 . 2013

6.0%.

+1.9%,

+14.6%, -1.3% ( 2- -1.0%).

-1.4%.

« » ,

( , , )<sup>6</sup>, +0.3% ( 2-

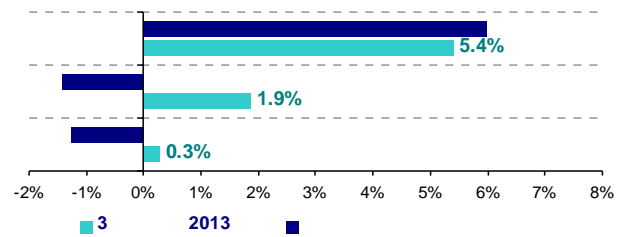
--1.9%). +9.3%, --13.8%. -1.3%.

3-

« » , 2- +3.9%, 3-

1- -2.9%. ; ,

+3.3%, 3- « » .



. 15.

3 . 2013 .

6 ( )



9.

, 3- 2013 ,

, . -

, ,

3- 2013 ,

, - , ;

;

« » , ,

, - « » . - 3- 2013

, -

---

- :  
\_\_\_\_\_
- \_\_\_\_\_ ( )
- :  
\_\_\_\_\_  
\_\_\_\_\_
- :  
- \_\_\_\_\_  
- \_\_\_\_\_