



(1 2011)

- 1.
- 2.
- 3.
- 4.
- 5.
- 6.
- 7.
- 8.

1.

2011

2010

3-

0.15-15.47% (. 1, . 1).

1.

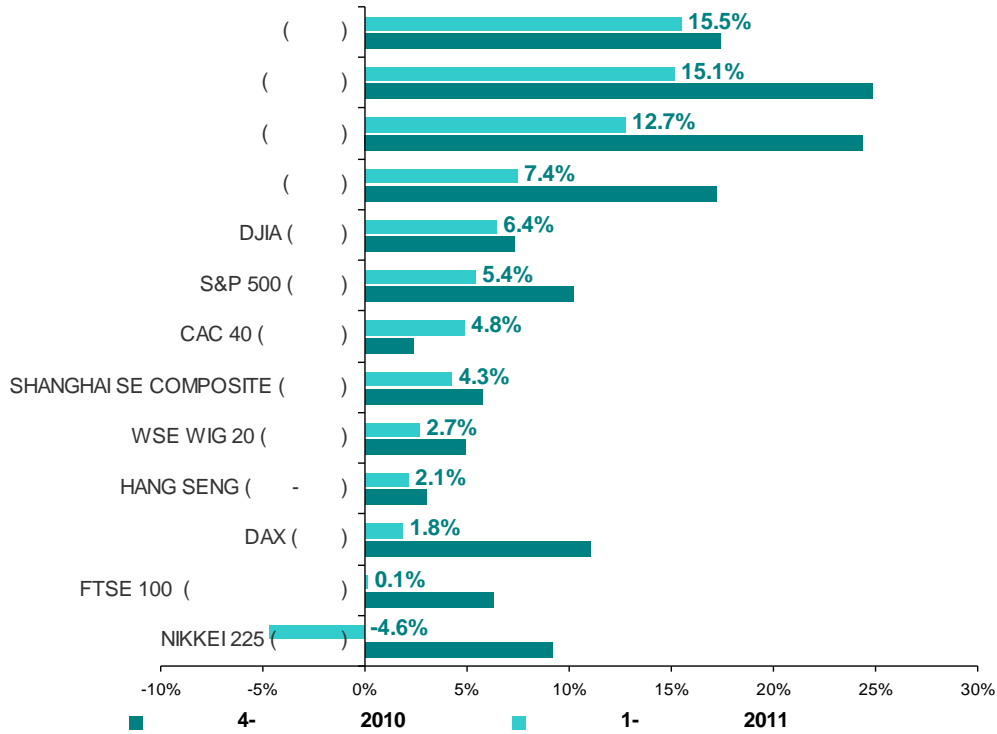
	30.09.2010	31.12.2010	31.03.2011	4-2010	1-2011	* 2011
()	1 507.66	1 770.28	2 044.20	17.42%	15.47%	
()	1 957.03	2 443.70	2 812.83	24.87%	15.11%	
()	784.04	975.08	1 099.18	24.37%	12.73%	
()	1 440.30	1 687.99	1 813.59	17.20%	7.44%	
DJIA ()	10 788.05	11 577.51	12 319.73	7.32%	6.41%	
S&P 500 ()	1 141.20	1 257.64	1 325.83	10.20%	5.42%	
CAC 40 ()	3 715.18	3 804.78	3 989.18	2.41%	4.85%	
SHANGHAI SE COMPOSITE ()	2 655.66	2 808.07	2 928.11	5.74%	4.27%	
WSE WIG 20 ()	2 615.22	2 744.17	2 816.96	4.93%	2.65%	
HANG SENG (-)	22 358.17	23 035.45	23 527.52	3.03%	2.14%	
DAX ()	6 229.02	6 914.19	7 041.31	11.00%	1.84%	
FTSE 100 ()	5 548.62	5 899.94	5 908.76	6.33%	0.15%	
NIKKEI 225 ()	9 369.35	10 228.92	9 755.10	9.17%	-4.63%	

*

Bloomberg



(1 2011)



. 1. 4- . 2010 . 1- . 2011 . *
Bloomberg

1-

2011
- 12.3% (2010).
2011 ,
(21
2008 5.55%).
+15.11% () 12.73% ().
4- 2010 28.80% (- 12.49%),
- 29.81%,
- 602.15%.

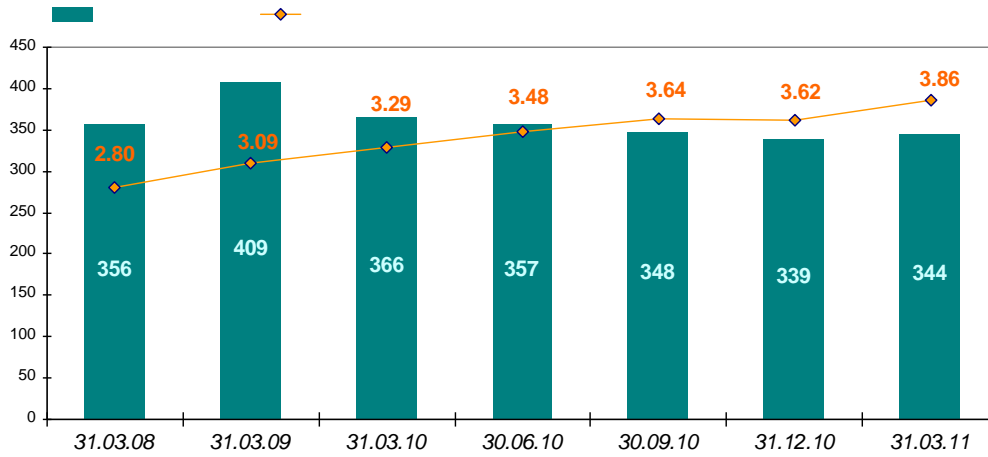
2.

, 1- 2011
, 7
(+5). 31.03.2011 344 .
- 2010 (-40)
- 2010- (+102),
() , 1-
1328 .
, 31.03.2011 3.86 : y
, 2010 ,

(. 2).



(1 2011)



. 2.

(+6,58%) 1167- (. 2), 1- 2011 72
 (+26 , +2,43%) 3-
 2010 .

2.

4- . 2010 . 1- . 2011 .,

		*	*	*	*	*	*	*	*
30.09.2010	1069	35	48	9	29	732	2	145	69
31.12.2010	1095	36	48	9	32	755	2	141	72
31.03.2011	1167	40	49	9	33	809	2	134	91
4-									
2010	2.43%	2.86%	0.00%	0.00%	10.34%	3.14%	0.00%	-2.76%	4.35%
1-									
2011	6.58%	11.11%	2.08%	0.00%	3.13%	7.15%	0.00%	-4.96%	26.39%

- (+26.39%, +19).

(+11.34%, +4).

(+54 , +7.15%).

1- 2011 131- 161- ,



: (1 2011)

3.

1- 2011
 (239, . 3).
 5- (3),
 - 69.62% 69.48% -
 (+2 , 27),
 ().

:
 71.02% 71.34%. 8.06% 8.63%,
 - 3.03% 3.25%, - 1.73% 1.95%.
 1-

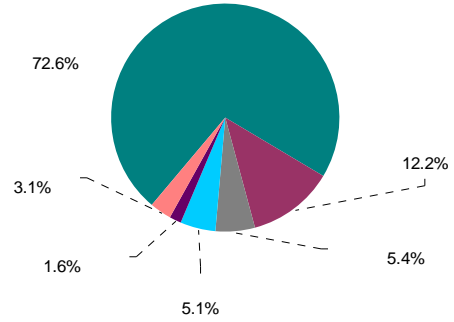
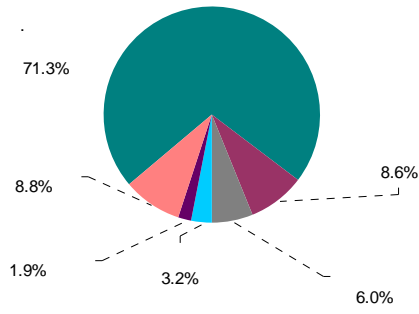


. 3. 31.03.2011 .

), - 72.30% 72.55% (. 4).
 (4.05% 5.10%) (1.46% 1.63%) .



(1 2011)



. 4.

31.03.2011 .

4.

2010 1- 2011- ,
 (+6.16%
 7.27%) , 7 691.24 . . . , 31.03.2011
 113 557.83 . . , 93%
 (+5.75%, 4- . 2010 - 0.60%).
 (92.5%).
 510.91
 31.03.2011 9 401.32 . . (. 3).

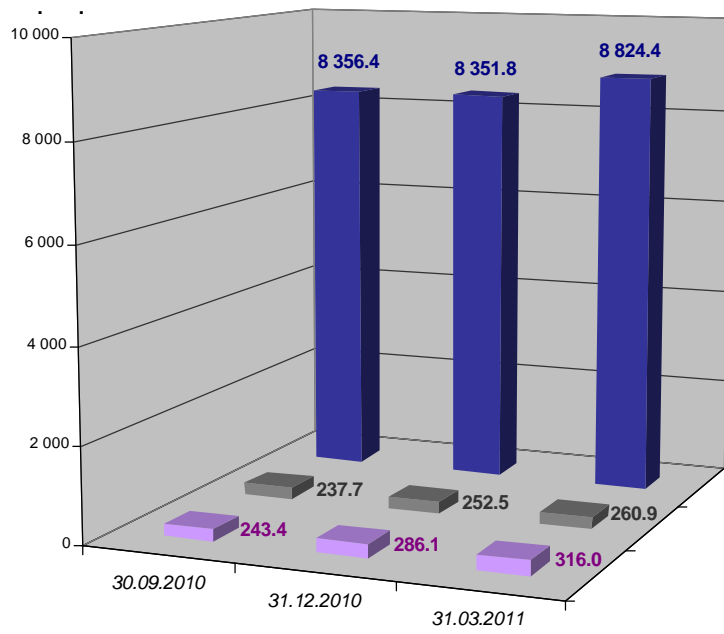
3.

	30.09.2010	31.12.2010	31.03.2011	4- 2010	1- 2011
	243.43	286.07	315.99	17.52%	10.46%
	237.72	252.53	260.90	6.23%	3.32%
()	8 356.38	8 351.82	8 824.44	-0.05%	5.66%
	8 837.53	8 890.41	9 401.32	0.60%	5.75%
	90 888.99	96 976.17	104 156.51	6.70%	7.40%
()	99 726.52	105 866.59	113 557.83	6.16%	7.27%

29.92 . . (+10.46%)
 11.55 . . (4%
 4- . 2010),
 4
 3%
 1- 2011
 1- . . -
 4- (- 10 .), 4 1 . .
 31.03.2011 315.99 . .
 1- 2011
 (+3.32%, +8.37 .).
 1- 2010
 260.90 . .
 4- 2010 ,
 472.62 . . , 5.66%, 5.75%.



(1 2011)

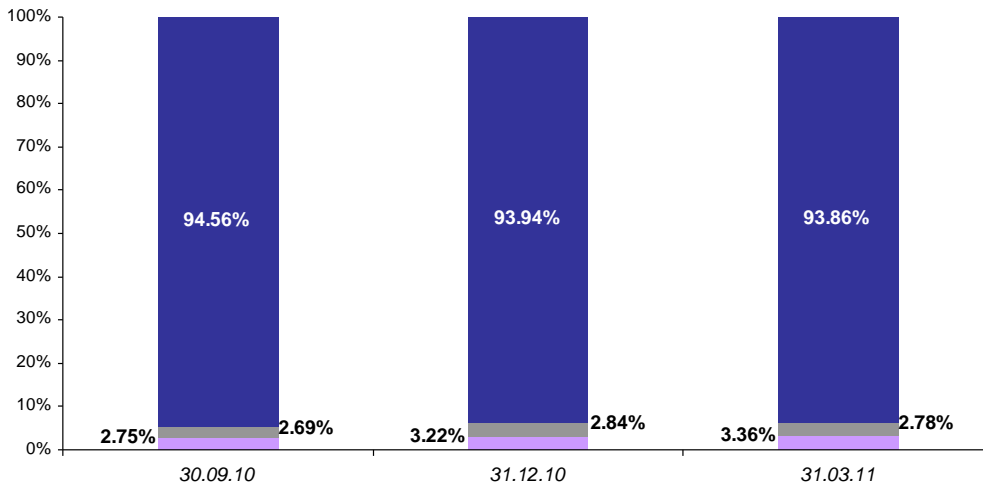


()

. 5. 4- .2010 . 1- .2011 .

1- 2011

3.22% 3.36%.
2.78% 93.86% (. 6).



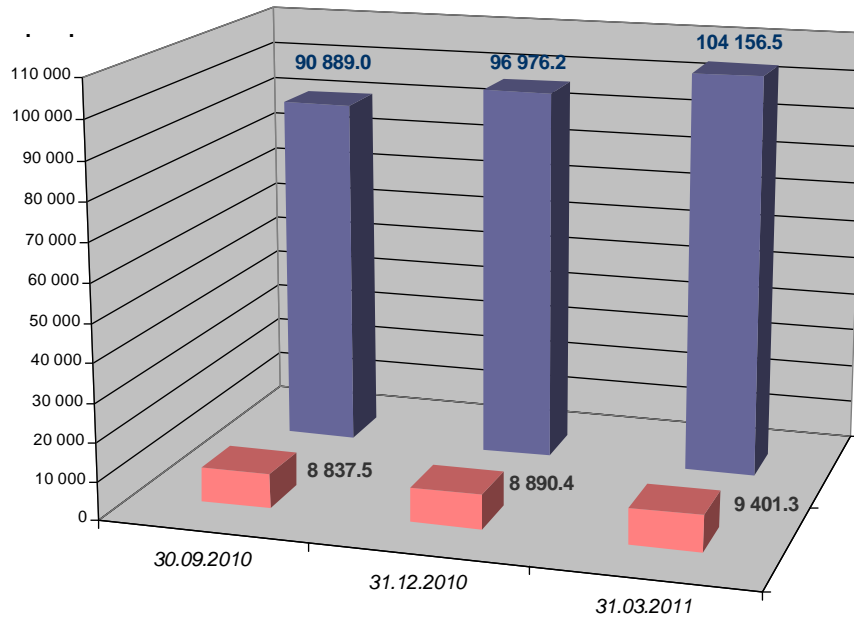
()

. 6. 4- .2010 . 1- .2011 .

104 156.51 . . 7 180.34 . . (+7.4%) 31.03.2011



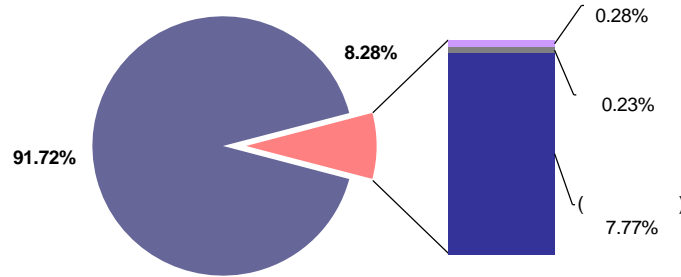
(1 2011)



. 7. 4- . 2010 . 1- . 2011 .

7.89% 7.77%.

- 1- 2011 91.60% 91.72% (. 8).



. 8. 31.03.2011 .

2010 , 2011 , , (+4.28%,
 +10.50 . .) 31.03.2011 255.71 . .
 (. 4). , (+8.64%,
 +24.31 . .), 305.65 . .
 - 3.77% (+293.00 . .). ,
 +3.95% (+327.81 . .) -
 4- 2010 7.58% (+6 552.03 . .)
 7.26%,
 , 92 991.08 . .



(1 2011)

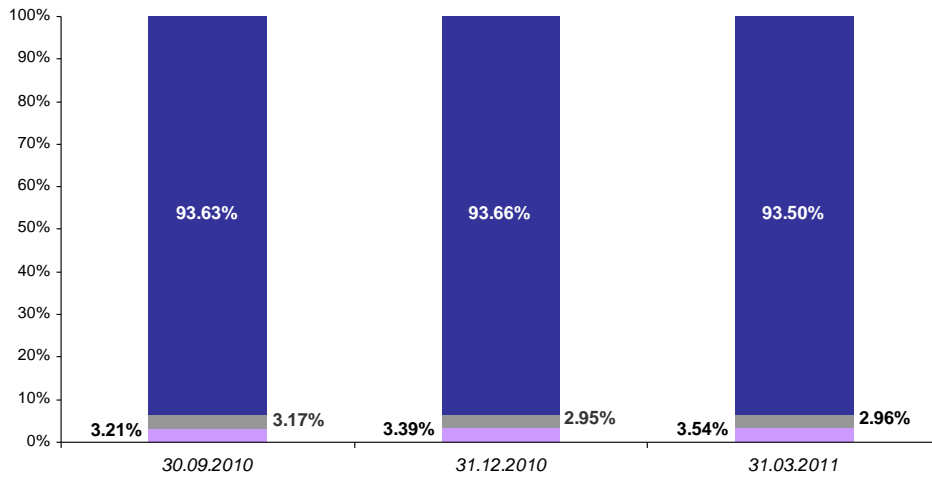
4.

	30.09.2010	31.12.2010	31.03.2011	4-2010	1-2011
	235.63	281.35	305.65	19.40%	8.64%
	232.69	245.22	255.71	5.38%	4.28%
()	6 880.71	7 775.72	8 068.72	13.01%	3.77%
	7 349.03	8 302.29	8 630.09	12.97%	3.95%
	80 791.36	86 439.05	92 991.08	6.99%	7.58%
()	88 140.39	94 741.33	101 621.17	7.49%	7.26%

(2.95% 2.96%).
31.03.2011

93.50%

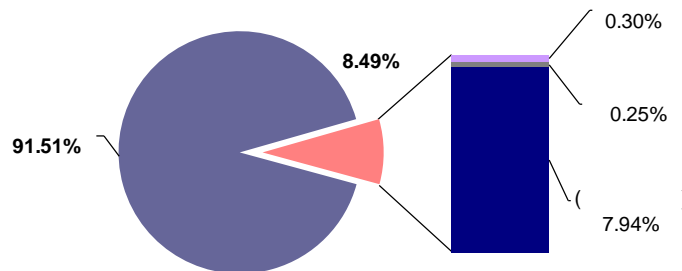
(.9).



. 9.

4- .2010 . 1- .2011 .

— : 91.24% 91.51% 8.21% 7.94%
(.10).



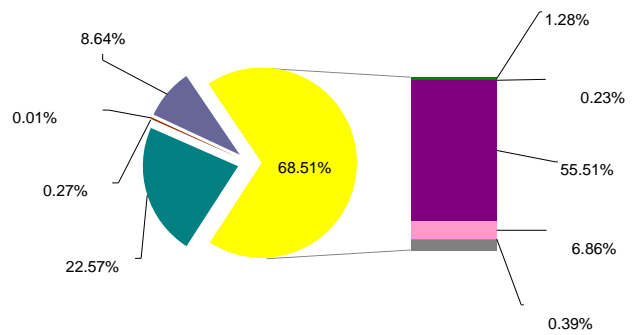
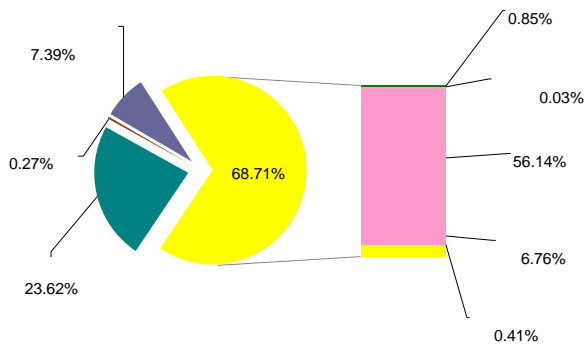
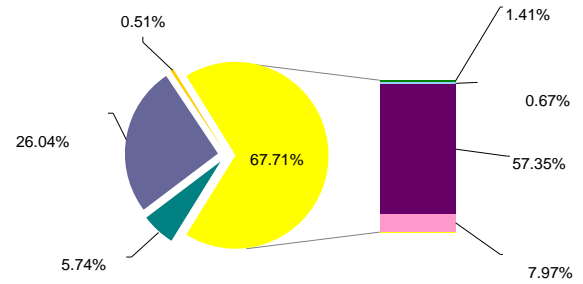
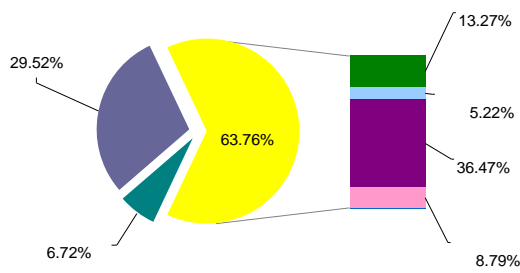
. 10.

31.03.2011 .



5.

1- 2011 ,
 , ,
 , 11), 71.61% 68.51% (60.19% 4- 2010,
 200 . . ; - 35.28% 34.93%
 1 619 . . (.12). (55.34% 55.51%),
 ,
 10 . . , , ,
 (2 . . « » ,
 « » (-
 0.8 . .).
)



. 11.

31.03.2011 .

2011

-
-

• « »

() - 8.69% 6.72%;

- 27.41 29.52%;
 - 13.09 13.27%;

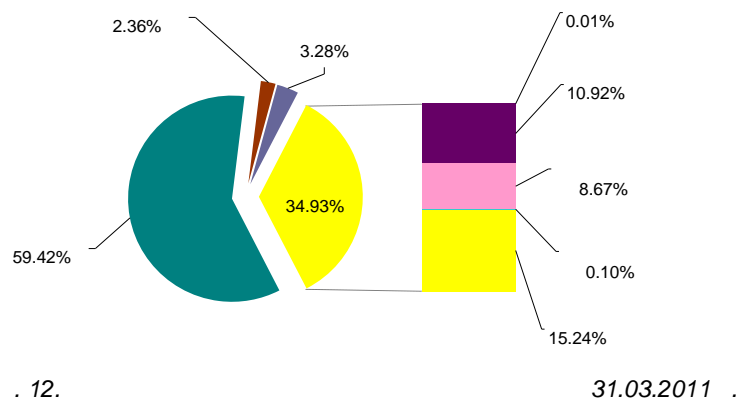
1-



(1 2011)

- - 36.74% 36.47%;
 - - 8.87% 8.79%;
 - :
 - - 24.20% 26.04%;
 - - 53.91% 57.35%;
 - :
 - - 4.86% 1.41%;
 - « » - 7.86% 5.74%.
- 1- 2011

- « »
- « » - 21.08% 23.62%;
 - - 6.60 7.39%;
 - - 56.04% 56.14%;
 - - 6.32% 6.76%;
 - :
 - « » - 6.28% 4.51%;
 - - 2.87% 0.85%.
- 1- 2011
- (. 12).



(+3 121.93 . .),

9.58 . .),



(1 2011)

- - 10.28% 10.92%;
- - 2.85% 3.28%;
- - 2.23 2.36%;
- « » - 59.64% 59.42%;
- - 9.22% 8.67%;
- « » - 15.76% 15.24%.

4 , , , 16 776.60 , .
 (38.93%). (15 732.21 . .),
 , 36.50 (. 5).

5.

31.03.2011 .		
i	16 776 604 503	38.93%
	15 732 208 923	36.50%
	9 589 904 468	22.25%
	547 773 008	1.27%
	277 813 936	0.64%
	131 900 000	0.31%
	28 436 988	0.07%
	14 267 465	0.03%
	43 098 909 291	100.00%

1- 2011
 (81.07%) (. 6). (5 279.18 . .),

6.

31.03.2011 .		
i	5 279 188 400	81.07%
	650 377 831	9.99%
	400 388 800	6.15%
	121 677 930	1.87%
	36 900 000	0.57%
	21 351 397	0.33%
	1 994 388	0.03%
	6 511 878 746	100.00%

2011 , 1-
 (, - 202 , , - 15, - 11)
 (. 7).



(1 2011)

7.

31.03.2011 .

1	" - "	404
2	" i "	269
3	" "	234
4	" "	214
5	'	202
6	" - "	200
7	" . "	189
8	" "	184
9	" " "	161
10	" - "	152

31.03.2011 , (. 8),
 -2 , -1), " - 98 , " "
 (95 , +5) " " (87)
 , -10 (+14).
 " 6- 4- 2010- (64) 11- 1-
 2011- (56).
 -10 12 (5- 7-), - 11 (6-).
 « »
 " " 12- 11- 4- 2010,
 " - 16- .

8.

31.03.2011 .

1	'	98
2	i	95
3	i	87
4	i	75
5	i	74
6	i i i "	68
6	i	68
7	i	66
8	i	63
9	i	59
10	i	57

2011 , , , « « » (1 297.44 .),
 -10 3- (1-)
 , 2- « » (916.13 .
 .), 9- .



(1 2011)

5- , 2- " (778.90 . .),

9.

31.03.2011 .

1	i	" " "	1 297 438 800
2		" " "	916 133 000
3	i	" " "	778 899 265
4		" 2008"	744 087 207
5		" - "	668 341 857
6		" - "	614 801 948
7	i	" " "	584 434 412
8		" " "	547 336 748
9	i	" " "	508 664 717
10	i	" " "	467 321 670

13 (-2 4- « 2010), 2- , 547.34 . ., 7- . " (508.66 . .), 11- 8- 1- 2011 « « » (. 10). 2- (202,98 . .) « « », " (174.18 . .), 6- (121.33 . ., 8- - 121.68 . .). 2010 , , 1- , -10 2 151.07 . . 2 500.36 . .

10.

31.03.2011 .

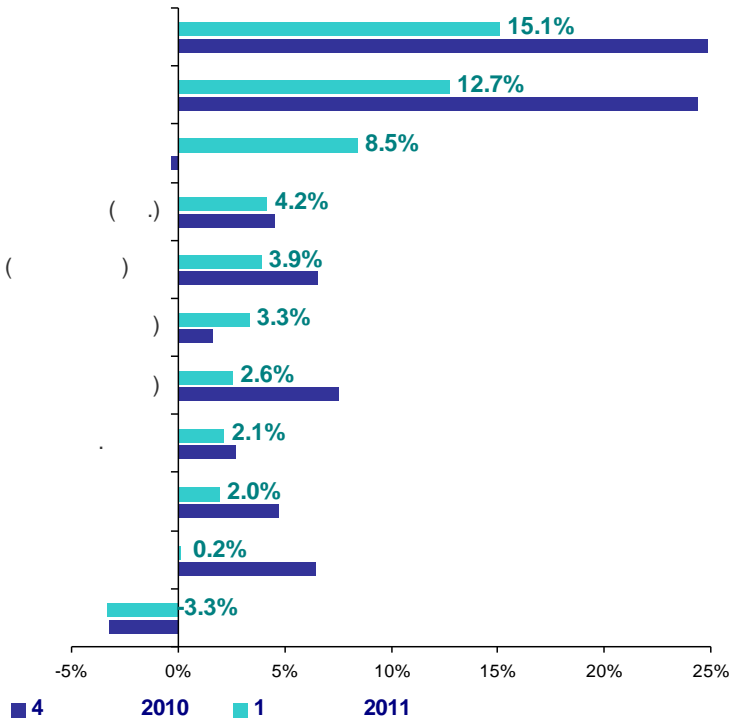
1	i	" " "	1 198 369 800
2	i	" " "	202 976 785
3	i	" " "	174 180 000
4		" " "	170 255 930
5		" - "	162 418 751
6	i	" " "	135 760 067
7	i	" " - - "	127 206 300
8		" " "	121 325 093
9	i	" " "	108 167 073
10	i	" G"	99 700 000



(1 2011)

6.

1- 2011
 : +0.18% ()
 +3.91% (), (3.34%)
 (+3.91%). , +8.47% (. 13). 10 36-
 , 14 41- 63 148- .
 , 2.5 +1.97%.
 -5.98% +11.27%, 4- 2010,
 (-2 . .).
 -36.29% +14.79%,
 (-29 . .).
 36
 +126.54%, (-96 . .) - -65.37%
 , 4- 2010
 (+7.11%).
 (+2.62%)



. 13.

4- . 2010 . 1- . 2011 .¹

¹ , 41- , 148- () 4 . 2010 (34- , 42- , 154-) 1 . 2011 (36- 2011 .
 2011 ()
 (: <http://www.blagovest.ua>).



(1 2011)

7.

1- 2011
 81.79% 82.23%
 - 63.71% 65.97%.
 15.31% (.11).
 - (61.38%), 31.03.2011 (58.62%)
 ((-0.10 . .) 22.68 . .)
 11.55 . .
 2010 , 25.37% 23.32%.
 -
 - 1.76% 13.54%
 1- 2011
 - (50.58%), 31.03.2011 (54.57%)
 ((+11.93 . .), 4.47 . .),
 (+3.01 . ., 5.24% 6.20%). 39.95% 42.97%
 - 1- 2011 - 65.88%
 68.29%. (-36.17 . .),
 25.69% 23.65%.
 - 0.19%.
 31.03.2011 83.76%, (83.50%).
 (1.09% 4- 2010) , 1 . . 1.22%
 -
 1- 2011
 3.38% 3.32%.

11.

31.03.2011 ., %				
	23.32%	13.54%	61.38%	1.76%
	42.97%	6.20%	50.58%	0.24%
()	68.29%	7.87%	23.65%	0.19%
()	65.97%	8.02%	25.76%	0.24%
	83.76%	14.99%	1.22%	0.04%
()	82.23%	14.39%	3.32%	0.05%



(1 2011)

8.

1- 2011

5 ,

1- 113 557.83

(+7 691.24 . . , + 7.27%) -

11.55 . . . 24.31 . . .

200 . . . - 1 600 . . .

2010 , - 2011 (, +3.91%),

11.27% (10 41- « (10 36- »),

14.79%

4- 2010 ,

1- 2011

1 . . .