



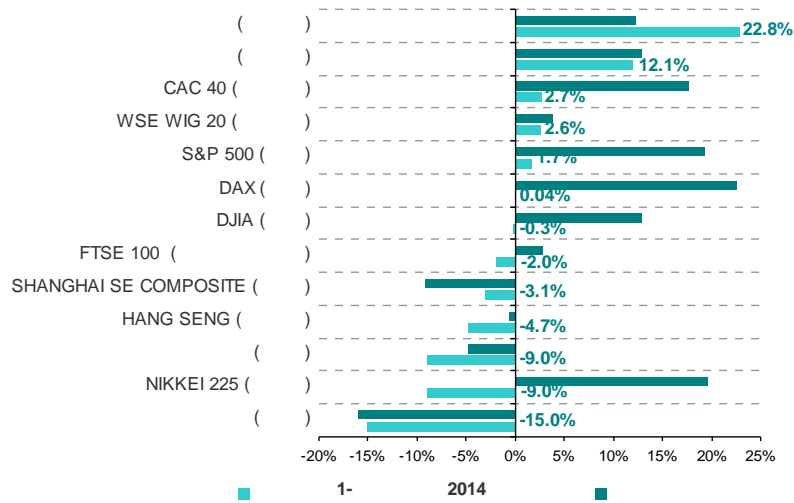
1. 1
 2. 2
 3. 4
 4. 5
 5. / 7
 6. 9
 7. 11
 8. 14
 9. 15

1.

2014
 QE
 2014
 1-
 1-
 1-
 4.7%, -3.1%, 9-15%, +12.7%, +2.7%, -0.3%/+1.7%. (. 1, . 1).
 : -9.0%
 2.6%.

	31.12.2013	31.03.2014	1-2014	1-2014 .*
()	300.53	369.18	22.84%	12.34%
()	910.04	1 019.72	12.05%	12.87%
CAC 40 ()	4 275.71	4 391.50	2.71%	17.69%
WSE WIG 20 ()	2 400.98	2 462.47	2.56%	3.90%
S&P 500 ()	1 841.07	1 872.34	1.70%	19.32%
DAX ()	9 552.16	9 555.91	0.04%	22.59%
DJIA ()	16 504.29	16 457.66	-0.28%	12.89%
FTSE 100 ()	6 731.27	6 598.37	-1.97%	2.91%
SHANGHAI SE COMPOSITE ()	2 097.53	2 033.31	-3.06%	-9.09%
HANG SENG ()	23 244.87	22 151.06	-4.71%	-0.67%
()	1 504.08	1 369.29	-8.96%	-4.82%
NIKKEI 225 ()	16 291.31	14 827.83	-8.98%	19.60%
()	1 442.73	1 226.10	-15.02%	-16.02%

* Bloomberg



1. 1-2014

« » 1- 2014

2012

+24% 2014

1- 2014 12.1%

(+7.3%), - 22.8% (, +0.7%).

8.1% (-143.34 . .), 1 625.72 . .,

- 3.5%, 1 373.45 . .

16.3%, 5.3%

(+53.87 . .)

51.9% (-127.81 . .), 118.28 . ., 13.1%.

1 812.71 . .) 9.5%.

(-770.35 . .), 736.12 . ., 51.1%

1- 2014 76.5%

70.6% - (-4 164.89 . .).

2014 6.4% ,

8 , 80 945.50 . .

90%

1- 2014 97%

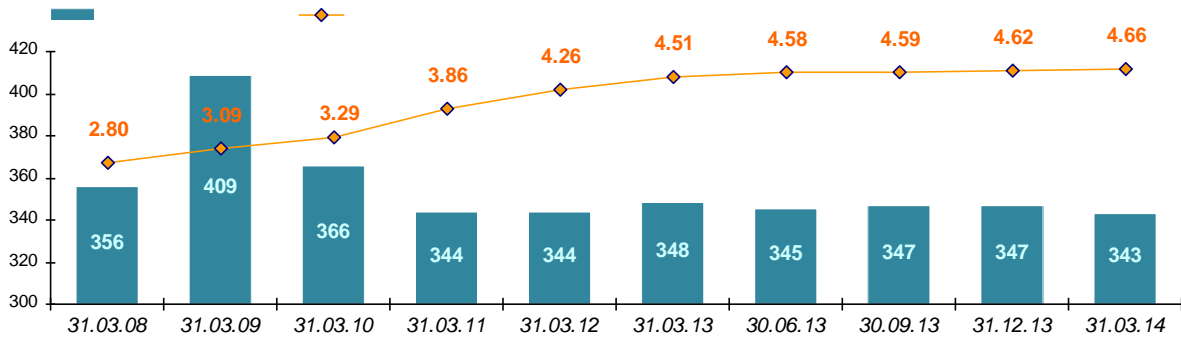
2.

1- 2014

1- 2013



31.03.2014 343 , 4 , (.2).
 1- 2014
 - 1597 (-7, +11 4-).
 , 4 (30 4- 2013).
 31.03.2014 4.66 (4.62
 31.12.2013).



. 2. 1 . 2008-2014 .

4- 2013 7 - 1243.
 , , , :
 (-3) (-1),
 (-5) (.2).
 1- 2014
 4 , 15 .
 « » 82.9% (1030),
 - 69.6% (865).

2.

1 . 2014 .

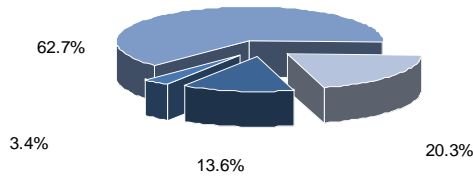
		*	*	*	*	*	*	*	*
31.03.2013	1213	42	38	11	48	826	1	108	139
31.12.2013	1250	38	35	11	43	861	2	90	170
31.03.2014	1243	38	35	9	42	865	2	87	165
1- 2014	-7	0	0	-2	-1	4	0	-3	-5
	-0.6%	0.0%	0.0%	-18.2%	-2.3%	0.5%	0.0%	-3.3%	-2.9%
	30	-4	-3	-2	-6	39	1	-21	26
	2.5%	-9.5%	-7.9%	-18.2%	-12.5%	4.7%	100.0%	-19.4%	18.7%

31.03.2014, 5
 , 4 , 3 , 16 , 19
 5 .

1- 2014 - 84 70,



6.3% 5.3%,
 2014-
 (-3 1- , -4) 31.03.2014 59
 , 8,
 (37), « , » , 3 (2), - 3
 , - 3 (12). , 1- 2014
 (. 3).



. 3. 31.03.2014

3.

2014
 4 . 241 (-4)
 1- (6).
 - , (. 4).



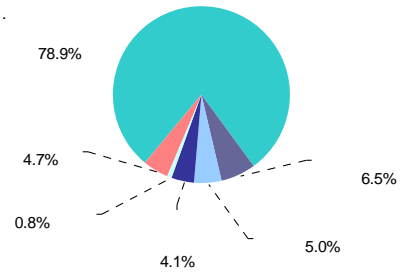
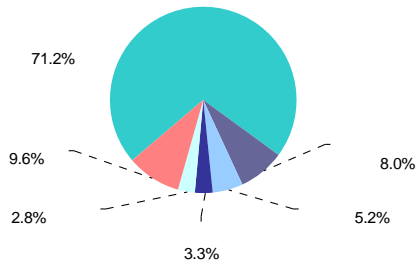
. 4. 31.03.2014 .

70.6% 70.3%.

1 . « () - »
[: http://www.uaib.com.ua.](http://www.uaib.com.ua)



1- 2013 (71.2%, 71.3%). 3- 9.6%
 4- 9.6%
 (9.7% 2013).
 (78.0% 78.9%) (4.8% 5.0%).
 (4.6% 4.7% (.5).



. 5.

31.03.2014 .

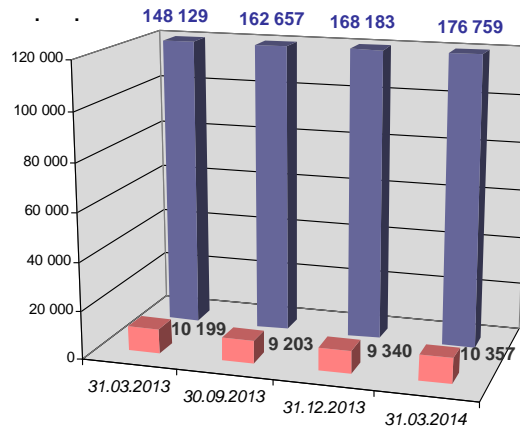
4.

1- 2014

(+3.58 . .).

(+11).

- 8.6 . . (.6).



. 6.

1 . 2013-2014 .

1- 2014 .



1- 2014

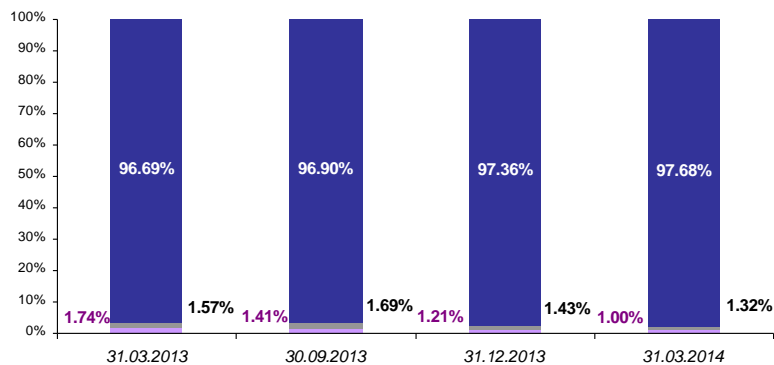
31.03.2014 187 116.78
 , - +9 593.79 . . (+5.4%, 3.3% 4-
 2013).
 176 759.40 . ., 8 576.02 . . (+5.1% 3.4% 4- 2013).
 1- 7 626.52 . . (+4.8%) 166 050.99 . .
 -
 9.93 . . (-9.6%), -15.94 . . (. 3).
 31- 93.70 . .
 1- 2011
 - +1.0 . . (+0.8%). 3.5
 20 14%
 31.03.2014 123.27 . .
 - +0.80 . .
 9.2% (9.6%, , -
 1- 2014 156 720.41 . .,
 6 839.57 . . 2013 (+4.6%).
 90% (4-
 2013 - 97%).

3.

1 . 2013-2014 . . .

	31.03.2013	30.06.2013	31.12.2013	31.03.2014	4-2013	1-2014	
	158.58	119.15	103.20	93.27	-13.38%	-9.62%	-41.18%
	143.05	141.99	122.28	123.27	-13.89%	0.81%	-13.83%
()	8 800.37	8 165.58	8 318.15	9 114.03	1.87%	9.57%	3.56%
()	9 102.00	8 426.72	8 543.63	9 330.57	1.39%	9.21%	2.51%
	128 833.42	145 233.93	149 880.84	156 720.41	3.20%	4.56%	21.65%
()	137 935.42	153 660.65	158 424.47	166 050.99	3.10%	4.81%	20.38%

1- 2014
 -
 97.4% 97.7%, - 1.4% 1.3%, - 1.2% 1.0%
 (. 7).

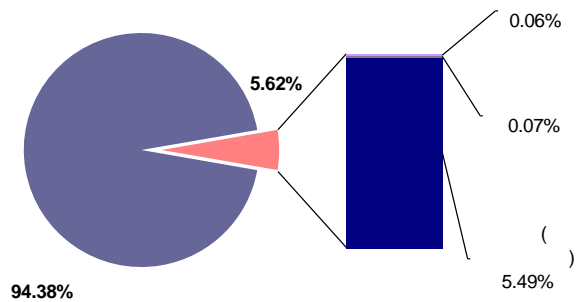


. 7.

1 . 2013-2014 .



1- ,
 - 94.6% 94.4% (.8).

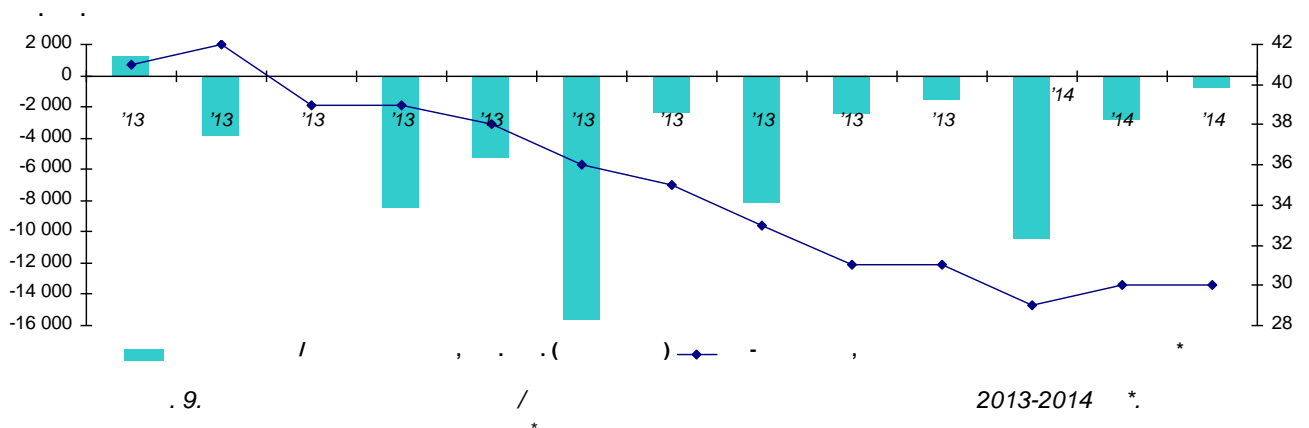


.8.

31.03.2014 .

5. /

2014
 10 . . , 3/4 (.9, .4).
 96% , 93% ,
 « » ,
 (-
 0.80 . .), 2013 -
 (+1.30 . .).
 4- 2013 ,
 1- , 2-4
 2013 -0.45 . . , 10-17 31-33
 4- 9-13 29-30 - 2014 .

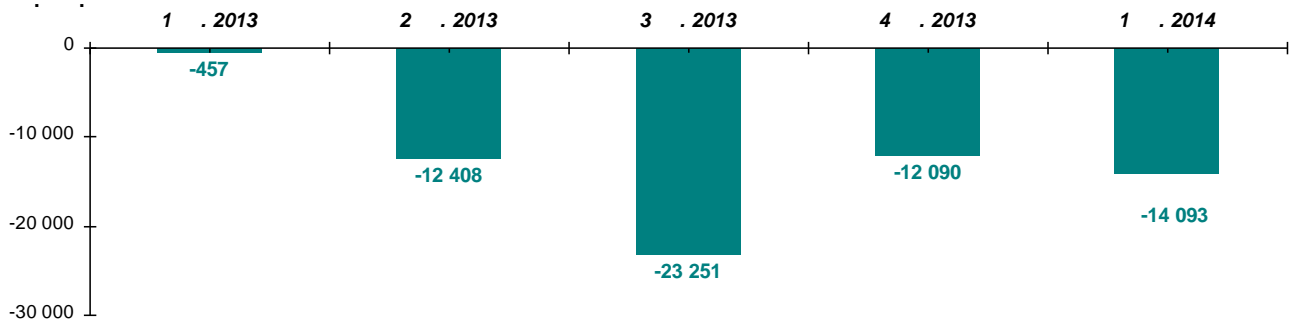




	2013-2014	*
'13	1 297	41
'13	-3 870	42
'13	-70	39
'13	-8 467	39
'13	-5 268	38
'13	-15 623	36
'13	-2 360	35
'13	-8 137	33
'13	-2 445	31
'13	-1 508	31
'14	-10 446	29
'14	-2 844	30
'14	-804	30

*

17% 4- 2013 1- 2014 14.1 . . ,
 0.46 . . (. 10), , , « »
 , 3- 2011 .



. 10. / 1 . 2013-2014 .

170.77 . . , 11- ,
 61.84 . . , 28% , 31.03.2014,
 1- (31.12.2013 95%
 - 2014 142% 84%).
 (76% 4- 2013),

(UCITS)

51 . , 4- 2013 ² . - 152 . ,
 - 70 . -

UCITS

² . [EFAMA Investment Fund Industry Fact Sheet \(March\)](#).

1-

2014 .



2013- , (+62 , +3 2014 , -)
 (30 ,) , 1- 2014- , -
 - 33 , 28 (40 , 4- 2013).
 UCITS. , 2014 1-
 (-21 ,) , 29 -
 +14

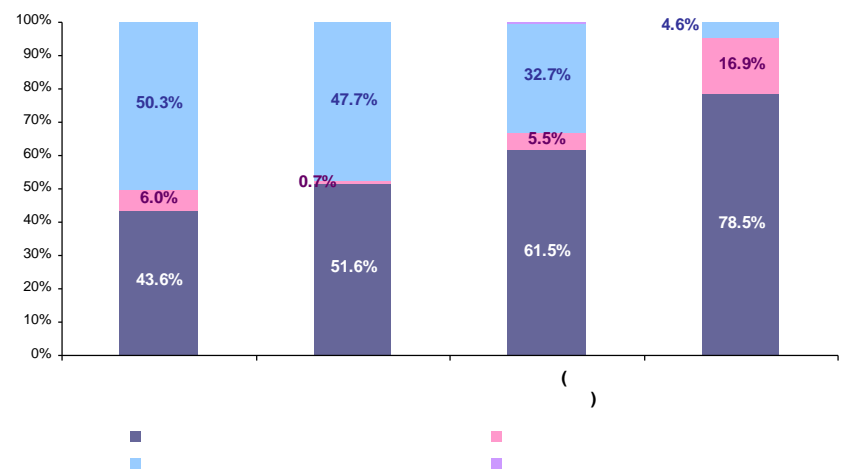
6.

1- 2014 , - 6 020.61 . (+4 606.92 .)
 - 77.4% 77.5% (.5, .11)³. 94%

5.

31.03.2014 . ,

	43.60%	6.03%	50.31%	0.07%
	51.59%	0.68%	47.70%	0.03%
()	61.50%	5.47%	32.75%	0.28%
()	61.19%	5.42%	33.12%	0.27%
	78.47%	16.92%	4.60%	0.02%
()	77.49%	16.26%	6.22%	0.03%



. 11.

31.03.2014 . ,

3



1- 2014

2 199.45 . . (+1 399.79 . . 4- 2013), 83%

- 5.1% 6.2%.

1- 566.77 . . (-

1 369.13 . .), - 510.94 . .

(, -1 361.95 . .).

636.40 . . ,

31.03.2014 16.3% (17.5% 4- 2013).

1- 2014 -

9.12 . .). 8.47 . . (-

2.5 , 4- 2013

- 2.10 . . ,

47.6% 43.6%, -

47.5% 50.3%.

0.64 . . (-1.77 . . 2013),

0.07% . .

2014

1.38 . . (-17.37 . . 4-

2013). 50.9% 51.6%.

-

- 0.45 . . (4- 2013 - 1.97 . .),

48.5% 47.7%.

31.03.2014

0.67% 0.71%.

1- 2014

- , (+367.62 +358.79 . .),

- 68.93 . . (-132.10 . . 4- 2013),

5.5%

5.8%, , - 5.2% 5.5%.

- 31.5% 32.8%, - 63.1% 61.5%.

2013 , 1- 2014

- 5 668.91 . . (+4 583.96 . . 4-

2013) - 1 834.38 . . (+1 171.15 . .).

78.3% 78.5%, - 3.6% 4.6%.

-

4- 2013). 575.42 . . (-1 229.10 . .

18.1% 16.9%.

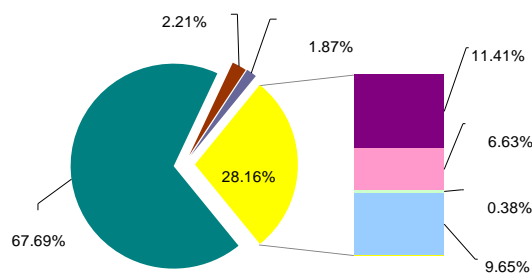
69% (-60.98 . .),

- 0.06% 0.02% -



- – 18.8% 8.5%;
- – 64.0% 64.3%;
- – 1.3% 1.7%;
- – 0.6% 0.8%;
- « » – 9.6% 8.7%;
- – 6.7% 6.6%;
- ()
- « » – 40.1% 47.9%;
- – 1.2% 2.6%;
- – 34.6% 32.0%;
- – 11.8% 9.1%;
- – 5.6% 2.8%;
- – 5.8% 5.2%.

1- 2014 , ,
 : « » , – ,
 7 687.39 . , , – 1 071.49 .
 (.13). , 2.5 , (0.03%).



. 13. 31.03.2014 .

1- 2014 :

- « » – 66.6% 67.7%;
- – 6.3% 6.6%;
- – 0.2% 0.4%;
- – 10.5% 9.7%;
- – 2.5% 2.2%;
- – 2.3% 1.9%
- – 11.5% 11.4%.



1- 2014

2013) 31.03.2014 1 653.18 . . (-2 761.92 . . 4-
54 315.81 . . .

1- 2014
903.66 . . (-921.13 . .)

23 499.14 . . , 42.9% 43.3% (. 6).

2014
- 608.01 . . (-727.40 . . 4- 2013), 17 572.60 . . ,
- 34.5% 32.4%.
842.59 . . .

2013 (-1 404.59 . . 4-) .
21.2% 22.1%,
12 008.41 . . .

341.64 . . (+237.58 . . 4- 2013), 704.76 . . ,
0.7% 1.3% , 172.57 . . .
(0.6%).

6.

		31.03.2014 .	
i	23 499 143 566		43.26%
	17 572 597 274		32.35%
	12 008 406 243		22.11%
	704 757 618		1.30%
	321 185 040		0.59%
	108 404 655		0.20%
	99 075 639		0.18%
	2 208 180		0.004%
	35 200		0.0001%
	54 315 813 415		100.00%

2014 . . -288.00 . . . (.) 1- :
+4.24 . . . - 228.90 . . ,

2013 (+46.12 . .).
11.7% 6.6% (. 7).

7.

		31.03.2014 .	
	3 272 429 266		73.39%
	529 435 060		11.87%
	523 015 734		11.73%
	131 247 055		2.94%
	1 573 858		0.04%
	1 156 728		0.03%
	4 458 857 701		100.00%



275.48 . . . , - +144. 23 . . . ,
 68.26 . . . 1- (-360.32 . . . 4- 2013-), 3 340.69 . . . , -
 73.4% 74.9%. 521.41 . . . ,
 11.9% 11.7%.
 31.03.2014 77.7% (. 8).

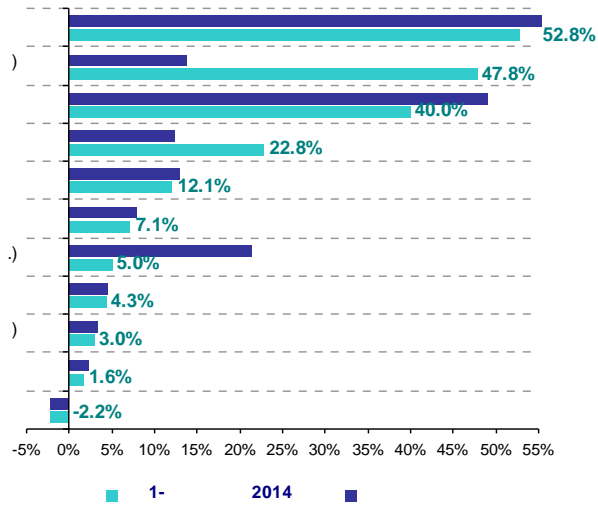
8.

	31.03.2014	
	665 648 897	77.74%
	156 587 159	18.29%
	21 797 484	2.55%
	11 095 494	1.30%
	1 106 586	0.13%
	856 235 620	100.00%

8.

2014

25% 32% 1- 64% (. 14),



. 14.

1 . 2014 .⁵

⁵
 4- 2013 - . 1- 2014 31- , 28- , 110- (2-
 2012 (.) .
 : <http://www.domik.net>, <http://100realty.ua>, <http://realt.ua>.



1- 2014

+7.1% (+2.5% 4-

2013). (+5.0%),

40%.

52.8%, 4- 2013 -5.4%, 1- 2014 -7.9%)⁶.

(- 3.0%), 1-

4.3% (+15.9% 4- 2013). +1.6% (+0.5%

-1.6%),

(-2.2%).

- 2014

4- 2013), 8- -3.0% +22.4% (-10.0% +46.1% - 2013

() 25 31- (22- 31-

20.8% +75.8%). 8 - -8.6% +11.1% (4- 2013 -

(13 28-), 8 - 17 28-

-2). (4-

49.2% +878.9%). 51 110- -23.3% +92.9% 1- 2014 (4- 2013 -

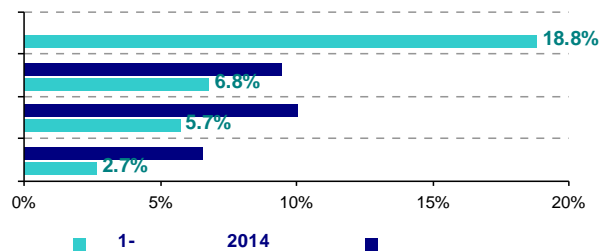
(55 111-).

19 25, 15

1- 2014)⁷ (+18.8%, +3.3% 4-

2013) (. 15). 2 17.6%

20.0% (5-



. 15.

1 . 2014 .

6

7

