



1. .... 1  
 2. .... 2  
 3. .... 4  
 4. , , / ..... 5  
 5. .... 8  
 6. .... 13  
 7. .... 14  
 8. .... 15

**1.**

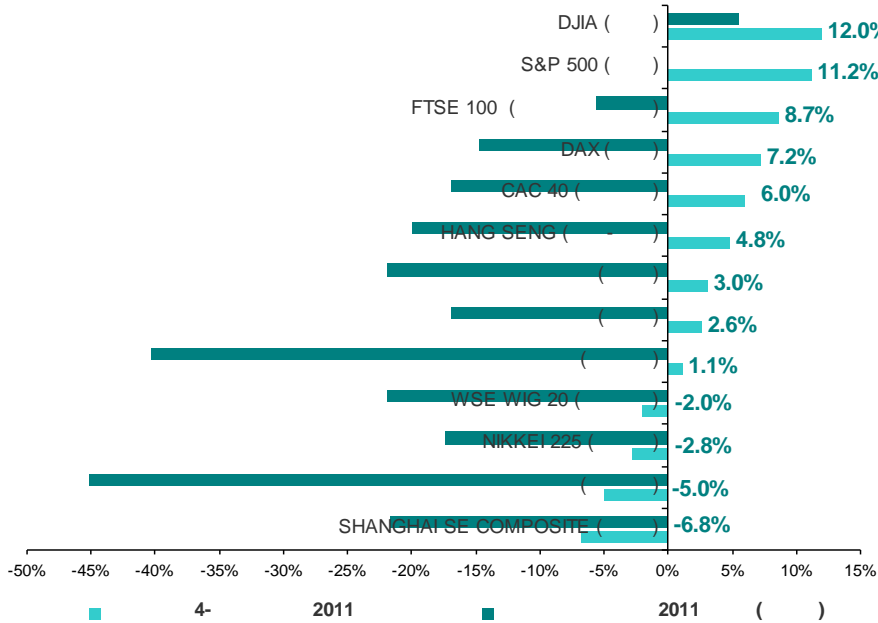
2011 , 3- , 4-  
 , 2- ,  
 , ,  
 , ,  
 , , « » ,  
 , , -  
 , ,  
 -2.82% ( ) 11.95% ( ).  
 (-6.77%).  
 : 2%, 4- 2-3%.  
 : C 4- 1.12%  
 4.96% ( .1, .1).

	31.12.2010	30.09.2011	31.12.2011	4- 2011	2011 * ( )
DJIA ( )	11 577.51	10 913.38	12 217.56	11.95%	5.53%
S&P 500 ( )	1 257.64	1 131.42	1 257.60	11.15%	-0.003%
FTSE 100 ( )	5 899.94	5 128.48	5 572.28	8.65%	-5.55%
DAX ( )	6 914.19	5 502.02	5 898.35	7.20%	-14.69%
CAC 40 ( )	3 804.78	2 981.96	3 159.81	5.96%	-16.95%
HANG SENG ( - )	23 035.45	17 592.41	18 434.39	4.79%	-19.97%
( )	1 770.28	1 341.09	1 381.87	3.04%	-21.94%
( )	1 687.99	1 366.54	1 402.23	2.61%	-16.93%
( )	2 443.70	1 442.73	1 458.87	1.12%	-40.30%
WSE WIG 20 ( )	2 744.17	2 188.73	2 144.48	-2.02%	-21.85%
NIKKEI 225 ( )	10 228.92	8 700.29	8 455.35	-2.82%	-17.34%
( )	975.08	562.32	534.43	-4.96%	-45.19%
SHANGHAI SE COMPOSITE ( )	2 808.07	2 359.22	2 199.42	-6.77%	-21.68%

\* Bloomberg



(4- 2011 )



. 1. 4- 2011 4- 2011 ( ) Bloomberg 2011 \*

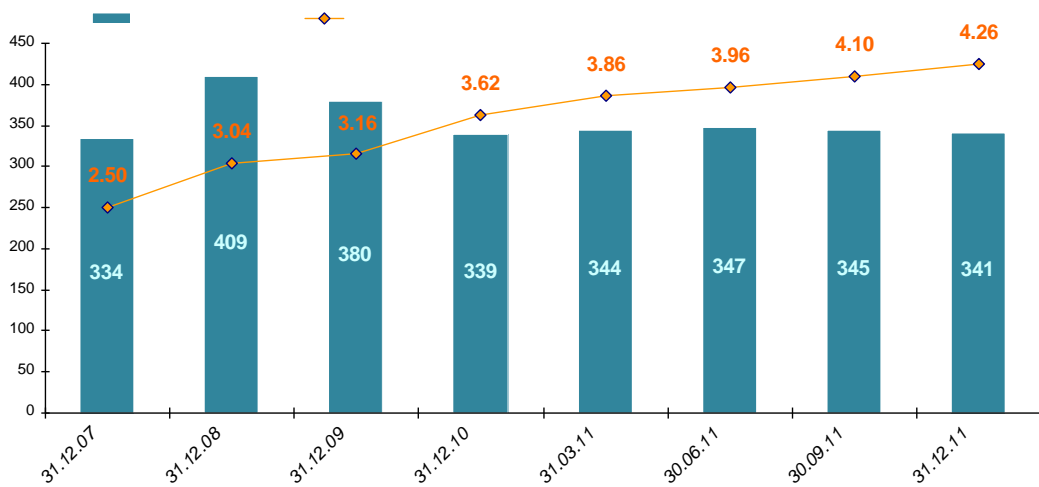
12%, 12%, 2.76%, 29.85%, 17.11%, 33.70%, 0.74%, 17.34%, 5.73%, 33.77%, 2011 DJIA (+5.53%), 17%, 2008 - 17%-22%, - 40-45%, 6%-

**2.**

4- 2011 (-4 ) 31.12.2011 341 ( . 2). (+2 ) 2008 (347 30.06.2011). : , 2011 : (+36 +40 3- ). 31.12.2011 1451 ( 1226 31.12.2010). : 4.26



(4- 2011 )



. 2. 2007-2011 .

( ) , 4- 2011 , (-81 +28 3- ) . 2011 ( .2) .

2.

		4- 2011								
		*	*	*	*	*	*	*	*	*
31.12.2010	1095	36	48	9	32	755	2	141	72	
31.03.2011	1167	40	49	9	33	809	2	134	91	
31.06.2011	1178	42	47	9	36	822	2	130	90	
30.09.2011	1206	43	47	10	39	844	2	127	94	
31.12.2011	1125	43	40	10	35	772	2	128	95	
4- 2011	-6.72%	0.00%	-14.89%	0.00%	-10.26%	-8.53%	0.00%	0.79%	1.06%	
2011	2.74%	19.44%	-16.67%	11.11%	9.38%	2.25%	0.00%	-9.22%	31.94%	

4- (+1 , +1.06%). (-7 , -10.26%), (-4, -10.26%), (-72, -8.53%). 3- 2011 4- 13- 31.12.2011 3-4- 195- 175- 4-



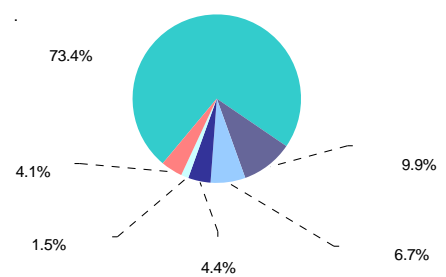
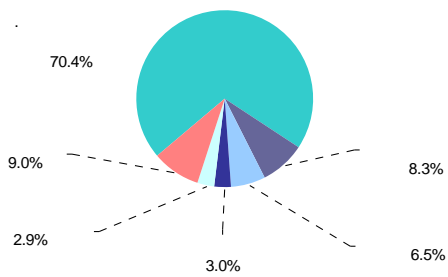
3.

2011 , 2 – 241- ( . 3). ( 4 4- 70.43% 70.67%). (20).



. 3. 31.12.2011 .

4- , 6.01% 6.46%, – 7.92% 8.27%. -5 ( 3.01% 2.99%), -5 ( 72.41% 73.42%), ( 5.32% 4.41%) ( . 4). – ( 10.31% 9.95%)



4.

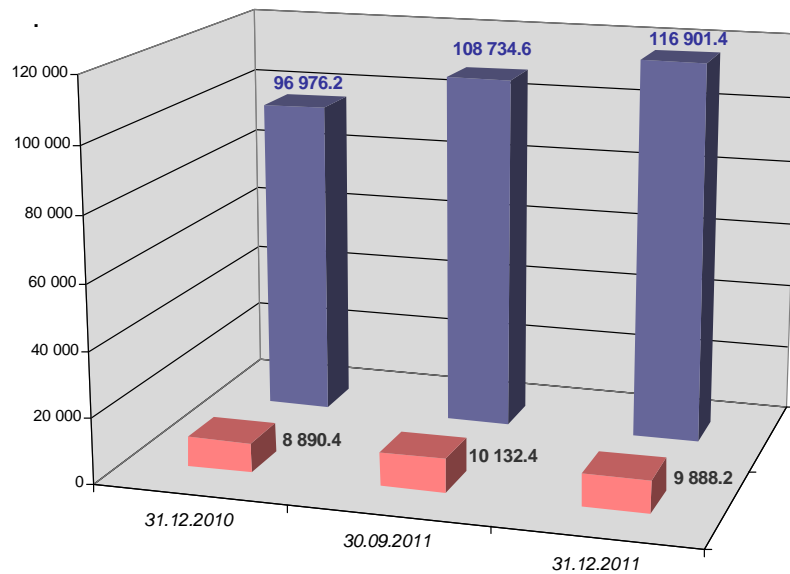
31.12.2011 .



4.

4- 2011 ,  
3- ,  
789.60 . , - 116 901.41 . . ( . 5).  
4- , ,

4- 7  
1 , - 2 .



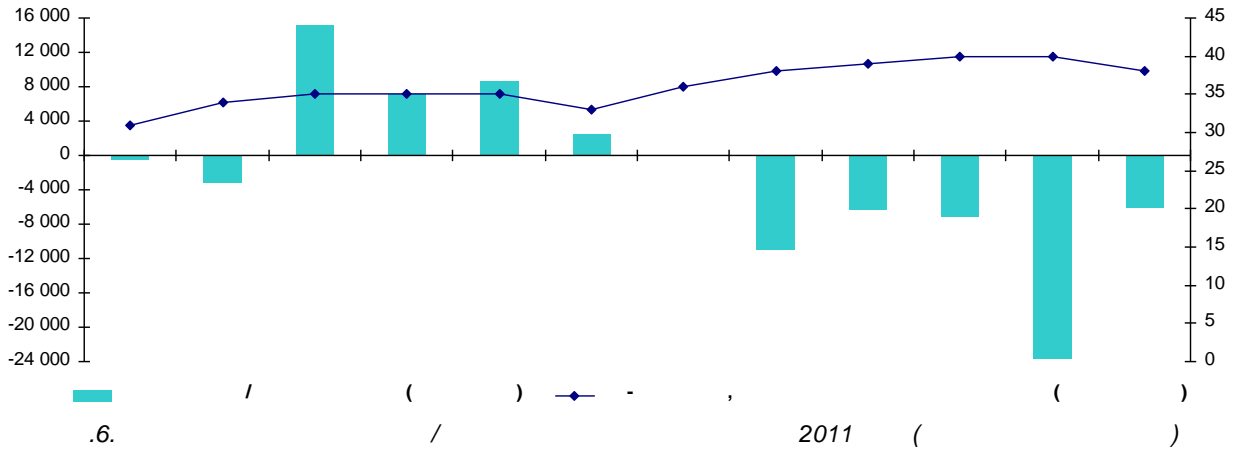
. 5. 4- 2011  
4- , , (-13.92%, -37.92)  
,  
431.73 . . (-4.56%) ( . 3).  
8 834.94 . . (+9.32%).  
2011 112 691.07 . . (+9 117.51 . . , +8.80%).  
**2011** 17 949.73  
, . (+18.95%), - 17 217.86 . . (+19.92%).  
25.84% ( 181.85 . . ), 19.31% ( 227.01 . . )

	31.12.2010	30.09.2011	31.12.2011	4- 2012	2011	( )
	281.35	263.72	227.01	-13.92%		-19.31%
	245.22	188.42	181.85	-3.49%		-25.84%
( )	7 775.72	9 013.74	8 625.30	-4.31%		10.93%
	8 302.29	9 465.88	9 034.16	-4.56%		8.82%
	86 439.05	94 821.97	103 656.91	9.32%		19.92%
( )	94 741.33	104 287.85	112 691.07	8.06%		18.95%



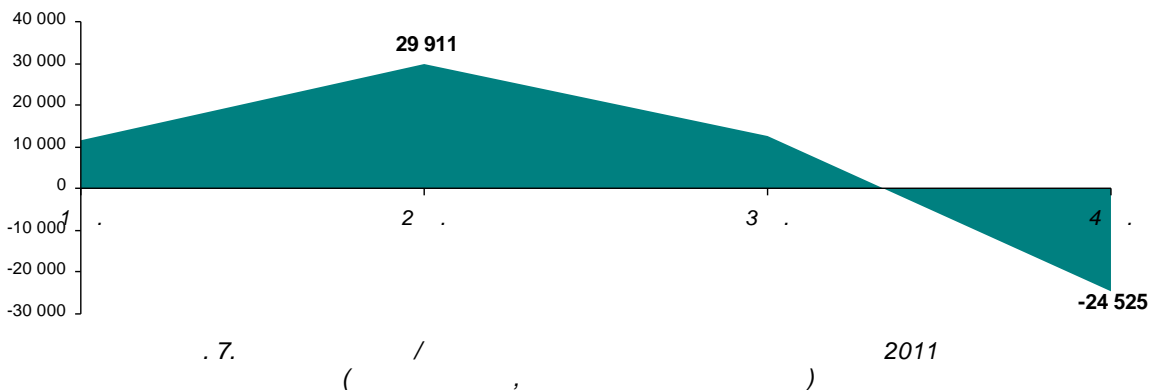
4- -23.65 . . ( . 6, . 4).

85% 37.01 2 - 64%. 61% (-22.52



		2011 ( )		
		/	/	/
		2011		
1		-448.52	11 552.16	11 552.16
		-3 089.92		
		15 090.60		
2		7 172.00	18 359.28	29 911.44
		8 682.43		
		2 504.86		
3		-43.50	-17 427.29	12 484.16
		-11 040.64		
		-6 343.15		
4		-7 217.03	-37 009.55	-24 525.40
		-23 654.55		
		-6 137.97		

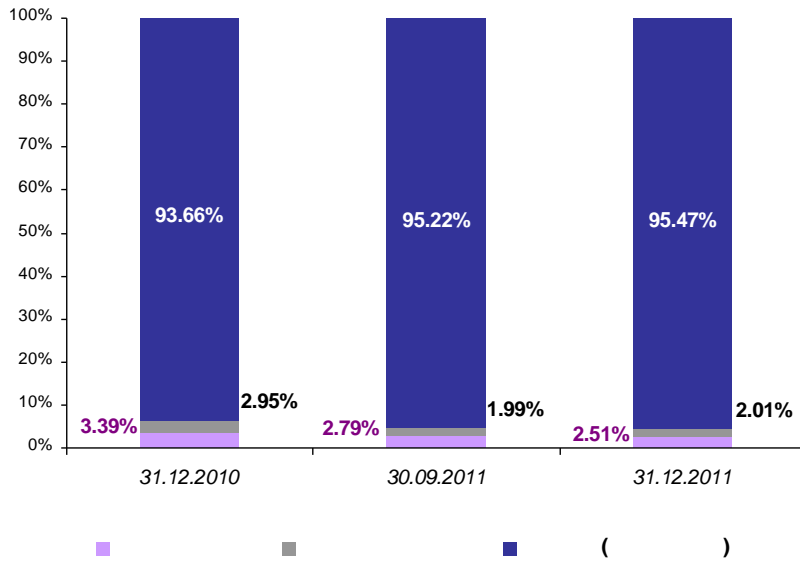
4- 24.53 . . 2011 ( . 7). 1-2- -





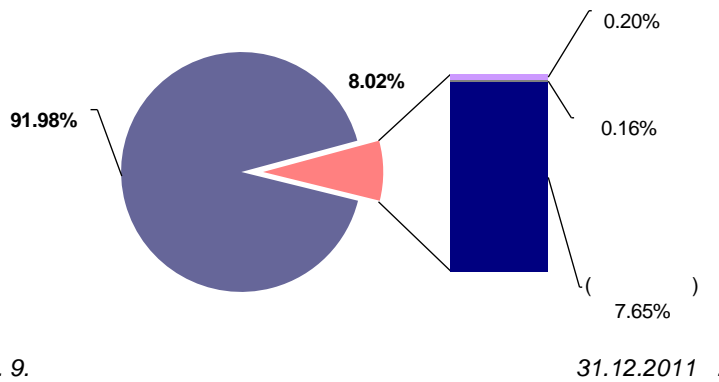
(4- 2011 )

95.47%, 1.99% 2.01% ( .8). 2.79% 2.51%, 95.22%



. 8. 4- . 2011

( 92.35%). 2011 92% ( 91.24% 31.12.2010). 4- 90.92% 91.98% ( .9) 3- 20%

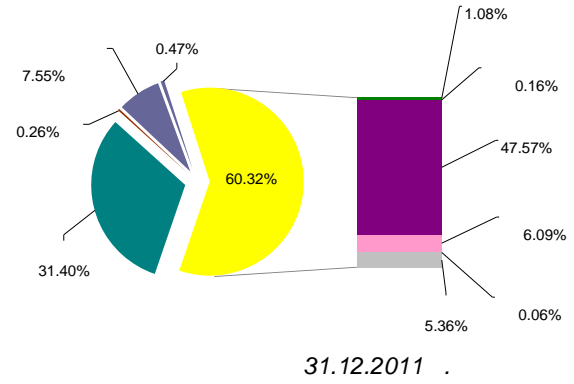
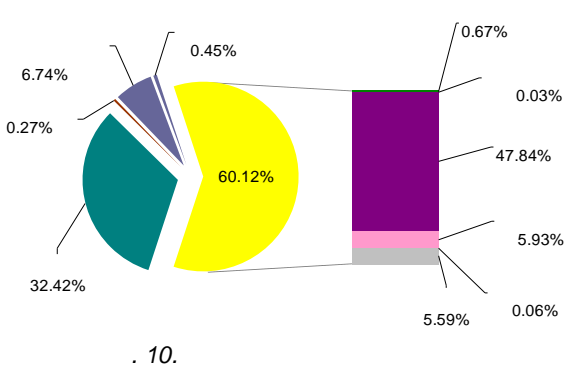
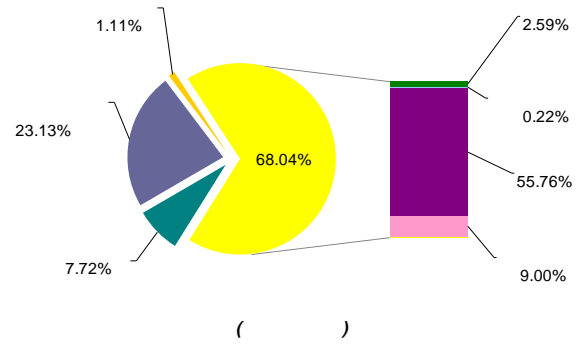
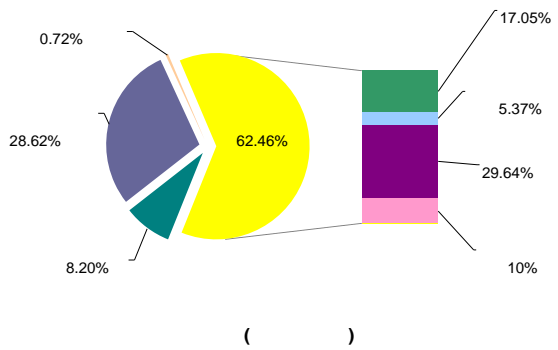


. 9. 31.12.2011 .



**5.**

2011 , , 4-  
 3- , ,  
 0.65 . . 60% ( . 10).  
 ,  
 53.28 . . , -  
 14.48 . . (+0.18 . . ).  
 ,  
 (+2.49 . . ),  
 (-19.33 . . ).  
 « »



2011 , 40-45%,  
 11.29 . . ( 71.61%), -  
 0.56 . . ( 67.47%). 4.05 . . (35.28%)  
 31.12.2010).  
 7.78 . . ( 55.34%),  
 - 1.86% ( 53.91%).  
 (-0.22 . . ).

4- 2011 .  
 :  
 • - 25.54% 29.64%;  
 • - 10.16% 10.39%;





- - 0.55% 0.72%;
- :
- - 31.79% 28.62%;
- - 17.49% 17.05%;
- - 5.82% 5.37%;
- :
- - 52.29% 55.76%;
- « » <sup>1</sup> - 7.59% 7.72%;
- - 2.56% 2.59%;
- :
- - 25.99% 23.13%;
- - 0.62% 0.22%;
- - 9.35% 9.00%;
- ( )
- « » <sup>2</sup> - 2.96% 5.59%;
- - 6.05% 6.74%;
- - 5.56% 5.93%;
- :
- - 49.45% 47.84%;
- - 1.40% 0.67%;
- « » - 33.68% 32.42%.

3-

4-

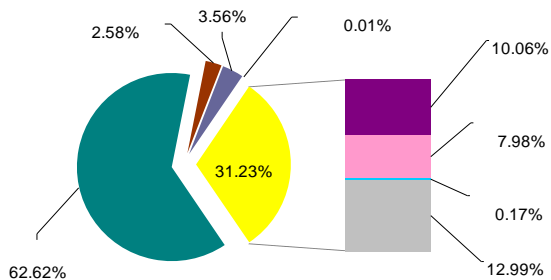
« » (+7 899.18 . .), 63%.

31.12.2011 . . . . . 2011

3.79 . . . . . 31% ( . . 11),

2 128.46 . . . . . - 1 522.16 . . . . .

4-



. 11.

31.12.2011 . . . . .

<sup>1</sup> « » . . . . .

<sup>2</sup> « » - . . . . . ( . . . . .).



(4- 2011 )

- « » – 59.03% 62.62%;
- – 3.34% 3.56%;
- – 0.02% 0.17%;
- – 12.06% 10.06%;
- – 8.29% 7.98%;
- « » – 14.64% 12.99%.

4- 31.12.2011 1-3- 2011 (+1 483.37 .), 35.75%  
39.52%) ( . 5).

16 322.32 1 895.03 3- 2011  
40.63% 36.83%.  
190.23  
0.69% 0.27%. 160.99  
0.08% 0.45%.

5.  
31.12.2011 .

	17 514 090 602	39.52%
i	16 322 316 353	36.83%
	9 783 641 301	22.07%
	336 018 325	0.76%
	197 887 500	0.45%
	120 966 788	0.27%
	40 630 293	0.09%
	5 496 590	0.01%
	<b>44 321 047 751</b>	<b>100.00%</b>

31.12.2011 4 743.79 82.93% 78.86%  
( . 6).

6.

31.12.2011 .

	4 743 787 437	78.86%
i	607 517 901	10.10%
	533 819 446	8.87%
	107 648 248	1.79%
	16 056 001	0.27%
	5 887 500	0.10%
	794 570	0.01%
	<b>6 015 511 103</b>	<b>100.00%</b>



(4- 2011 )

, 4-  
2011 .  
-10 , - 5 , ( , - 1 ) - 127 210- 3-  
( .7).  
" " (316 ) " - " (305 ).  
-10 « « » (101 ).

7.

31.12.2011 .

1	" " "	316
2	" - "	305
3	" "	253
4	" "	200
5	" - "	176
6	" - "	133
7		127
8	i " "	113
9	i " i "	109
10	" i i "	107

4- 2011  
116  
( 3- - 98), - 5, ( .8), - 1.  
-10 , " i  
i i " ( 63 56 ).

8.

31.12.2011 .

1		116
2	i " "	85
3	i " i "	83
4	i " "	75
5	i " "	65
6	i " i i i "	64
7	i " " "	61
8	i " " "	57
9	i " i i "	56
10	i " "	54

3-4-  
2011 .  
:  
- 52 ( 83- ); 36 ( 3- - 39),  
( 3- - 37), - 38 ( 64- ).



4- 2011 « . . ( . 9). , 34  
 1 781.72 . . ( . 9). , 34  
 « « », , ,  
 37.68 . . , 1 369.67 . . 4 (2 ) . ,  
 -10 4- , ,  
 « - » ( 36- ) « « » (25 ) ,  
 « | » (5 ) . « » ,  
 3- ( ) .  
 , , .

9.

31.12.2011 .

1		" "	1 781 715 500
2	i	" " "	1 369 670 400
3		" "	916 133 000
4	i	" " " 11"	574 270 665
5	i	" " "	534 710 131
6	i	" " " "	531 705 865
7		" - " "	515 717 256
8		" - " "	500 028 228
9		" " " "	460 408 740
10		"   " "	449 119 202

4- ,  
 : « - », « -  
 » « » ( . 10).  
 , -10, - ( , ),  
 99.74 . . (-67.23 . . 3- ).  
 (1 009.69 . . ), (-0.38 . . ). « « »

10.

31.12.2011 .

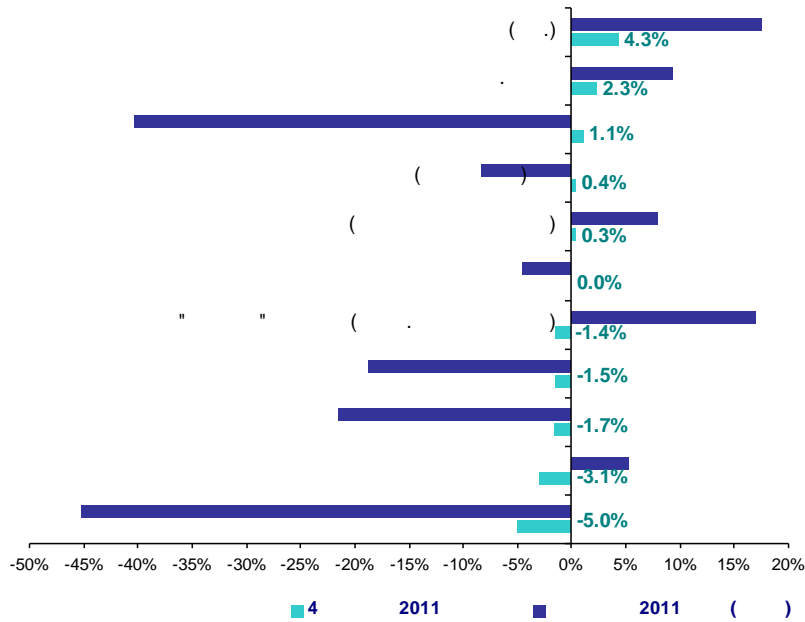
1	i	" " "	1 009 693 650
2	i	" " " 11"	206 929 650
3	i	" - " "	149 999 702
4		" - " "	135 000 000
5	i	" - " "	128 000 000
6		" i i "	120 387 602
7	i	" " " "	115 126 221
8	i	" " "	108 167 073
9	i	" - " "	107 558 660
10	i	" " "	106 999 900

4- 2011  
 : c -10 3.53 . . (+0.05%)  
 7 633.48 . . 7 922.56 . . (+6.67%).  
 - -10 449.83 . . (-17.05%) 2 187.86 . .  
 244.22 . . (-2.41%).



6.

2011 (-5%/+1.1%), +0.4% ( -1.7% )  
 , -1.5% ( .12).



. 12.

4- , 2011 3

39- 3- ) , 13- 4- 11- 40- ( 6- 6-  
 140- ( 40 138- ) , 36- ( 6 38- ) 59-  
 3- ), -11.09% +8.10%. 12. . . ( -13.6%  
 ), -75.1% +98.5% ( ). 8 . . ( -9.7% -7.6%  
 ( -21.5% -18.7% 2011 -8.3% ) ,  
 (-45.2%/-40.3%).  
 2-3- - 4- (-1.4%),  
 (+16.91%).  
 , 4- (-3.1%),  
 +5.33%.

2011 , (+4.3% 17.45% ) .

2011 , - .

<sup>3</sup> 4- . 2011 (40- , 36- , 140- ) - .  
 2011 .  
 2011 ( ) .  
 ( : <http://www.blagovist.ua>).



7.

81.00%) ( . 11). , 3- , 2011 ( 81.22%)  
 , 4- 31.12.2011 , 4-  
 ( 3.98% 4.20%),  
 26.89% 25.99%.

11.

31.12.2011 ..

	35.63%	13.69%	50.44%	0.25%
	48.42%	2.11%	49.39%	0.08%
( )	65.44%	9.57%	24.85%	0.14%
( )	<b>64.35%</b>	<b>9.52%</b>	<b>25.99%</b>	<b>0.14%</b>
	82.45%	15.19%	2.30%	0.05%
( )	<b>81.00%</b>	<b>14.74%</b>	<b>4.20%</b>	<b>0.06%</b>

57.49% 3- , 4- 2011 - 50.44% (  
 37 . . -  
 (-39 . .). 2011  
 (+3.6 . .),  
 29.31% 35.63%.  
 1.1 . .  
 2.1 . . , - - 13.21% 13.93% ,  
 1.00% 0.25%.  
 2011 -  
 (49.39% 50.94% 3- ).  
 (-6.8 . . -17 . . 3- ).  
 46.34% 48.42%.  
 388.4 . .  
 468.6 . . , 67.30% 65.44%.  
 - 175 . . ,  
 - 25.50% 24.85%.  
 183.2 . . , 7.07% 9.57%  
 7.12% 9.52%  
 31.12.2011 82.45% ,  
 (82.75%).  
 3- 1.69% 2.30%.  
 2011 , 4-  
 -



**8.**

, 2011

, 4, 3-

2011

« »

4- 2011

4- (+7%), 112 691 . ., 92%

31.12.2011

2011 19.9%

4- 37 19% (+17 950 . .).

24.5 2010

2011, 4-

4-

« ».

4-

4- 3- , -11% +8%, -13% +11% 13-

« »

11 ; -75% +98% (59 ).

, 2011

<sup>4</sup> . [European Quarterly Statistics \(Q4 2011 & Y-E 2011\) by EFAMA](#)