





(3 2010 )

3- (+3.3% +3.9%) « » 2- 19.3-20.0% 7  
 . 20 « » 41 76  
 (+5,05% +3,64%)  
 3- « », 2010 (+34.5-36.9%).

1.

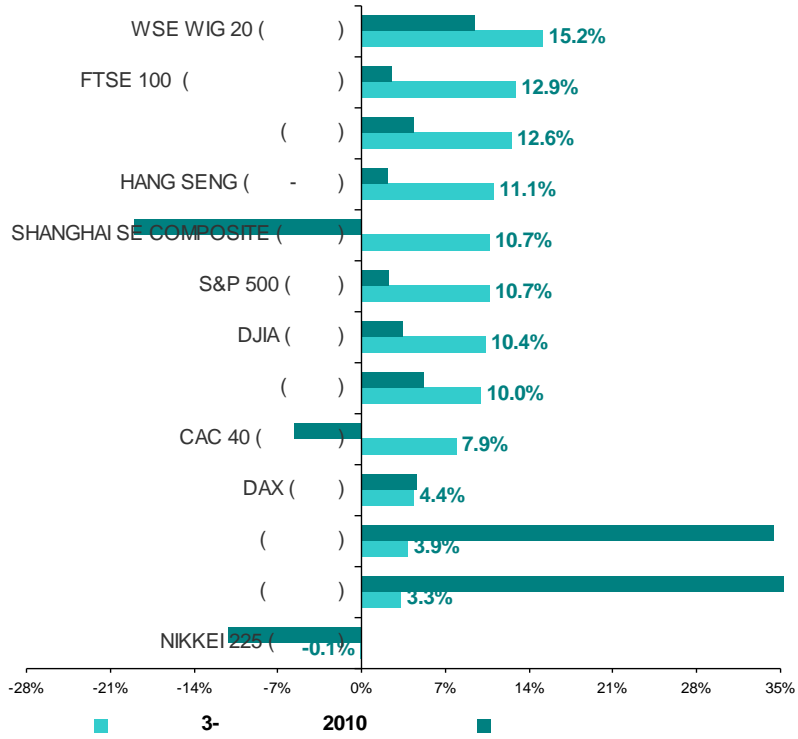
	31.12.09	30.06.10	30.09.10	3-2010	*
DAX ( )	5 957.43	5 965.52	6 229.02	4.42%	4.56%
HANG SENG ( - )	21 872.50	20 128.99	22 358.17	11.07%	2.22%
WSE WIG 20 ( )	2 388.72	2 271.03	2 615.22	15.16%	9.48%
( )	1 370.01	1 309.31	1 440.30	10.00%	5.13%
DJIA ( )	10 428.05	9 774.02	10 788.05	10.37%	3.45%
S&P 500 ( )	1 115.10	1 030.71	1 141.20	10.72%	2.34%
CAC 40 ( )	3 936.33	3 442.89	3 715.18	7.91%	-5.62%
FTSE 100 ( )	5 412.88	4 916.87	5 548.62	12.85%	2.51%
( )	1 444.61	1 339.35	1 507.66	12.57%	4.36%
NIKKEI 225 ( )	10 546.44	9 382.64	9 369.35	-0.14%	-11.16%
( )	572.91	758.74	784.04	3.33%	36.85%
( )	1 455.47	1 884.28	1 957.03	3.86%	34.46%
SHANGHAI SE COMPOSITE ( )	3 277.14	2 398.37	2 655.66	10.73%	-18.96%

\*

Bloomberg



(3 2010 )

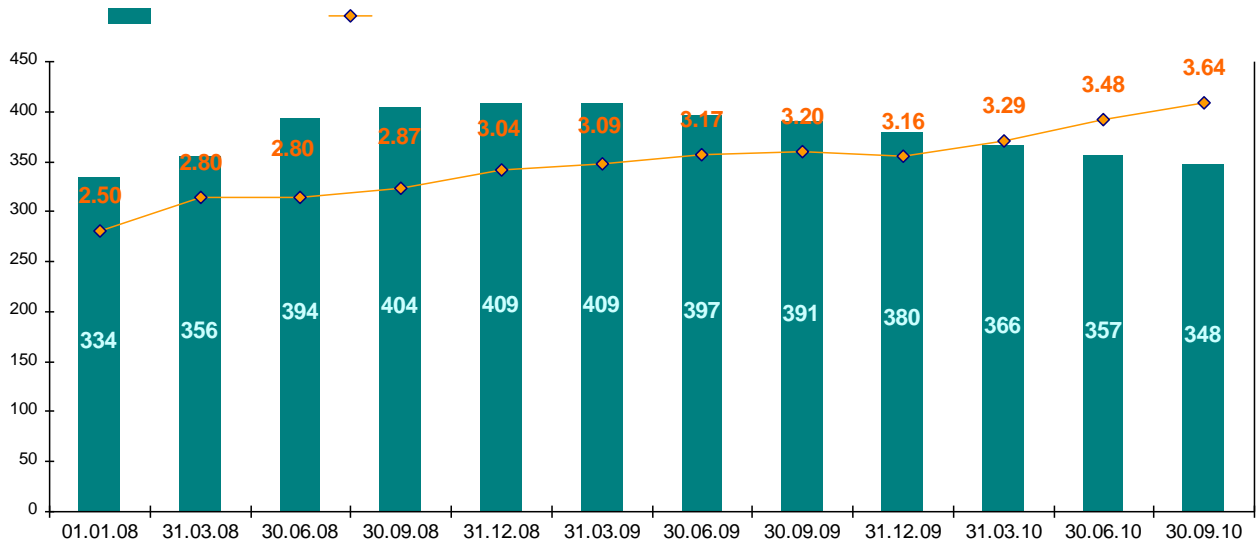


. 1. 3- 2010 Bloomberg 2010 \*

2.

, 3- 2010  
 30.09.2010 348 (-9 3 ).  
 (+25 +37 2-  
 3-  
 1266  
 30.09.2010 3.64

2010 ( . 2).



. 2. 2008 - 3 . 2010 .



(3 2010 )

(+1.81%) 1069- ( . 2), 3- 2010 19  
 2- (+35 ,  
 +3.45%).

2.

1-3 . 2010 .

		*	*	*	*	*	*	*	*
31.12.09	<b>985</b>	32	47	8	26	690	2	130	50
31.03.10	<b>1015</b>	32	47	9	28	715	2	130	52
30.06.10	<b>1050</b>	32	47	9	27	722	3	145	65
30.09.10	<b>1069</b>	35	48	9	29	732	2	145	69
<sup>3</sup> 2010	<b>1.81%</b>	9.38%	2.13%	0.00%	7.41%	1.39%	-33.33%	0.00%	6.15%
	<b>8.53%</b>	9.38%	2.13%	12.50%	11.54%	6.09%	0.00%	11.54%	38.00%

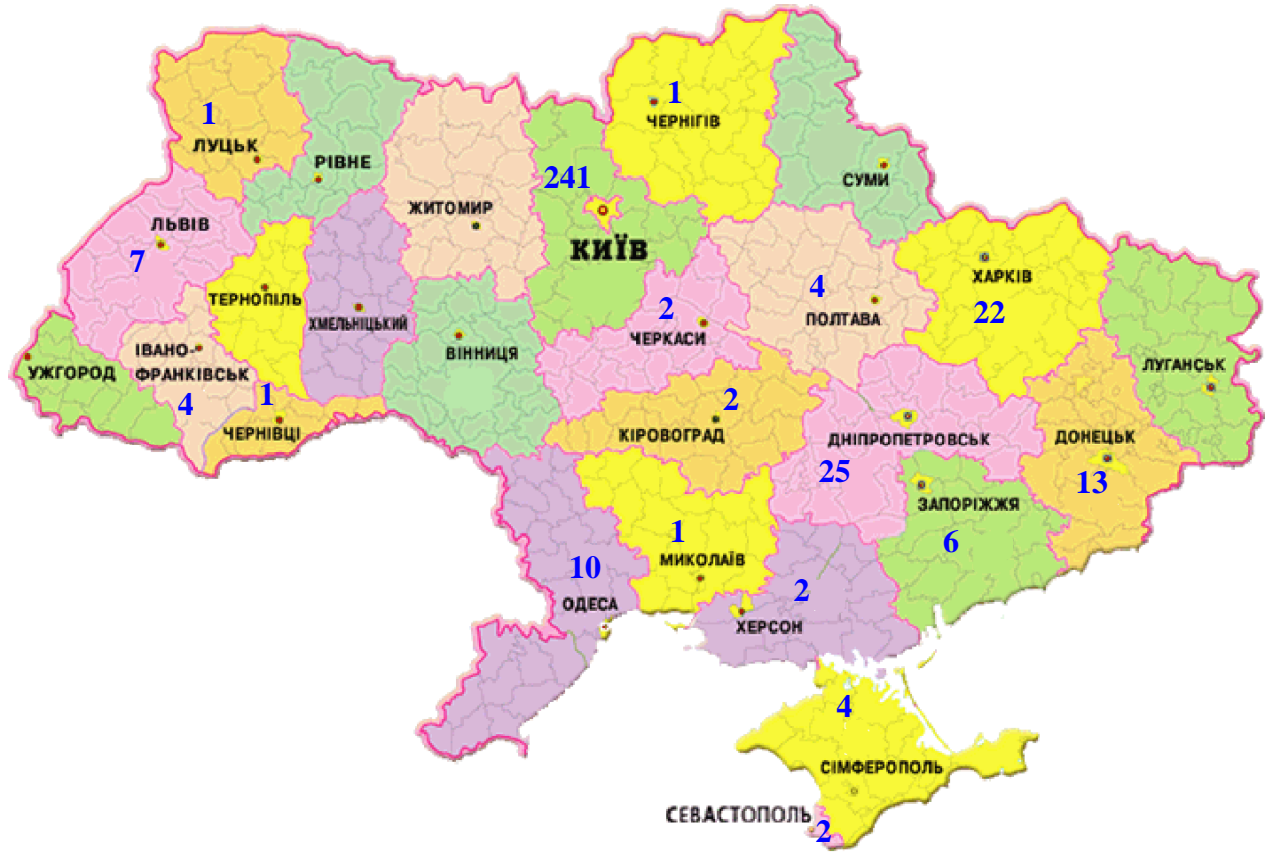
(+9.38%), 3 .  
 - (+7.41%,  
 6.15%  
 +2 ) .  
 (4 ) ,  
 (+38.00%, +19 ) .  
 +1.39%)  
 ( 68.76. 68.48%).  
 75.38% 30.06.2010.  
 / ,  
 30.09.2010 74.93%  
 - (-33.33%).  
 197  
 3-  
 4

**3.**

2010 (241, 69.25%) 3-  
 ( .  
 3). , 9 2- , 3-  
 12 ( 4 ).

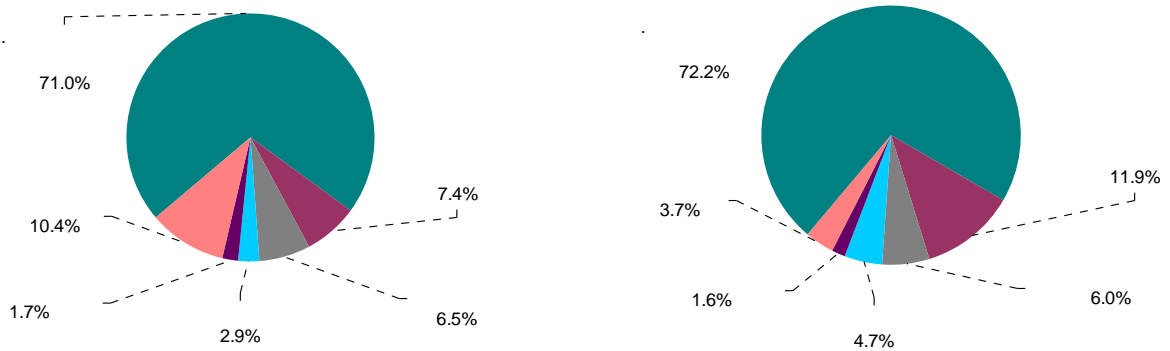


( 3 2010 )



. 3. 30.09.2010 .

7.4%. ( 69.3% 71.0%). , 3- 9.4%  
 ( 72.5% 72.2%). ( ) ,  
 ( 12.9% 11.9%) ( .4).



. 4. 30.09.2010 .



(3 2010 )

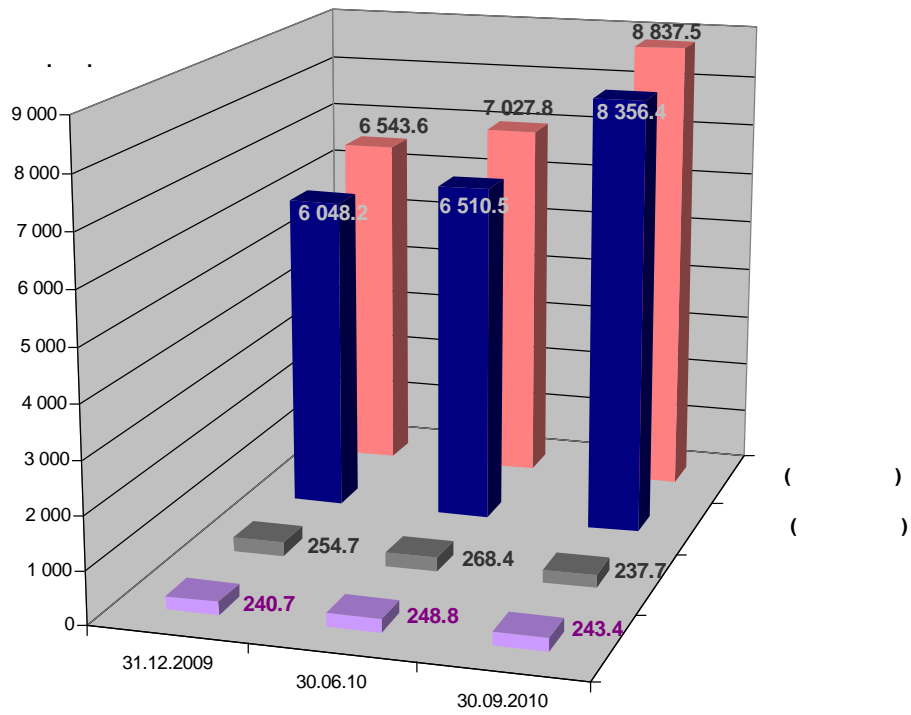
4.

3- 2010 ,  
 2- (-20%),  
 (+25.75%) 2 (-2.24%),  
 ( , ) 30.09.2010  
 8 837.53 . . ( . 3).  
 (-2.17%, -5.4 . . .),  
 (10.47 . . .), (-13.64 . . .).  
 (-11.43%, -30.68 . . .).  
 2010 -  
 17.02 . . (-6.68%).  
 2-3 , 2.71 . . (+1.12%),  
 - 2 308.2 . . (+38.16%).  
 2-  
 3- (+28.35%), 8 356.38 . .  
 30.09.2010 90 888.99 . . (+2.33%),  
 +2 070.96 . . .),  
 3-  
 99 726.52 . . , 4.05% (3 880. 73 . . .)

	31.12.2009	30.06.10	30.09.2010	2010 3- 2010	3.
	240.72	248.83	243.43	-2.17%	1.12%
	254.74	268.40	237.72	-11.43%	-6.68%
( )	6 048.18	6 510.53	8 356.38	28.35%	38.16%
( )	6 543.65	7 027.76	8 837.53	25.75%	35.06%
		88 818.03	90 888.99	2.33%	
( )		95 845.79	99 726.52	4.05%	



(3 2010 )



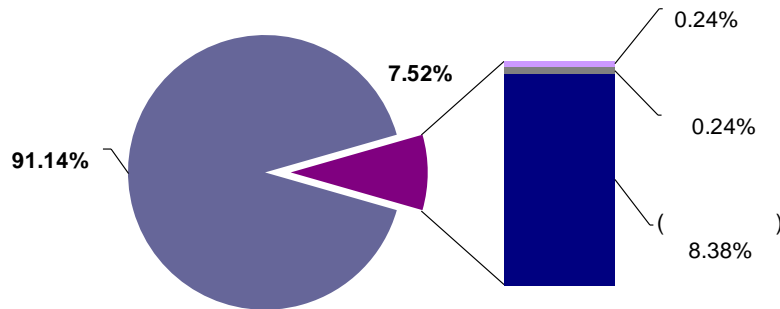
. 5.

3

2010

3-  
 2009 (2.90%), 2.75% -  
 30.09.2010 2.69%  
 3- 94.56%,  
 (6.79%) - 8.38%,  
 91.14% ( . 6, 7).

2008

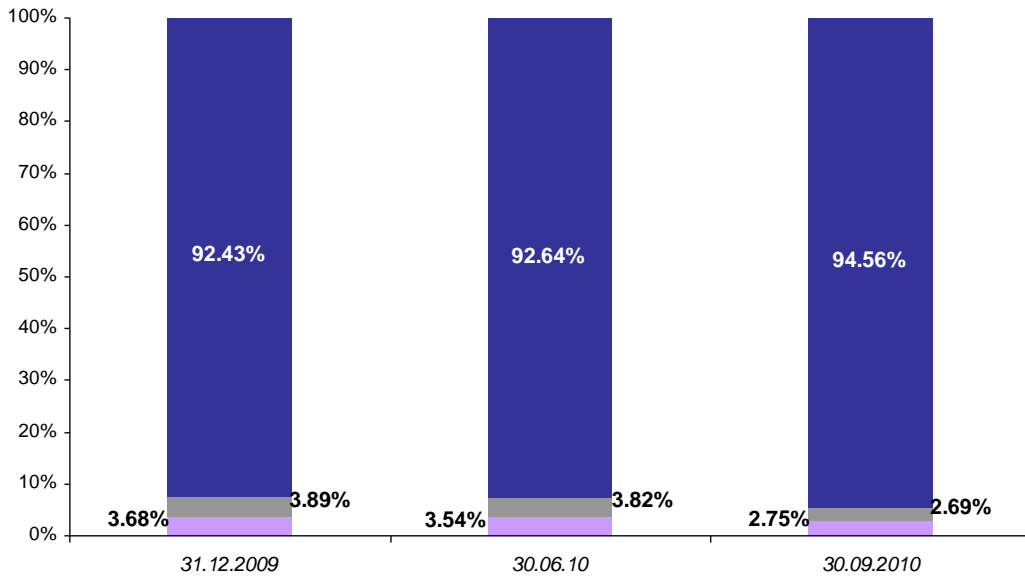


. 6.

30.09.2010 .



(3 2010 )



. 7. 3 2010

3-

14.31% ( - 28.35%), ( +12.66%)

1-

3- , 2010 (+24.70%) ( . 4).

4.

	31.12.2009	30.06.2010	30.09.2010	3-2010	
	234.35	240.01	235.63	-1.82%	0.55%
	246.51	263.87	232.69	-11.82%	-5.61%
( )	5 412.29	6 019.31	6 880.71	14.31%	27.13%
( )	5 893.15	6 523.19	7 349.03	12.66%	24.70%
		78 118.70	80 791.36	3.42%	
( )		<b>84 641.89</b>	<b>88 140.39</b>	<b>4.13%</b>	

2- , , 3.68% 3.21% 4.05% 3.17%

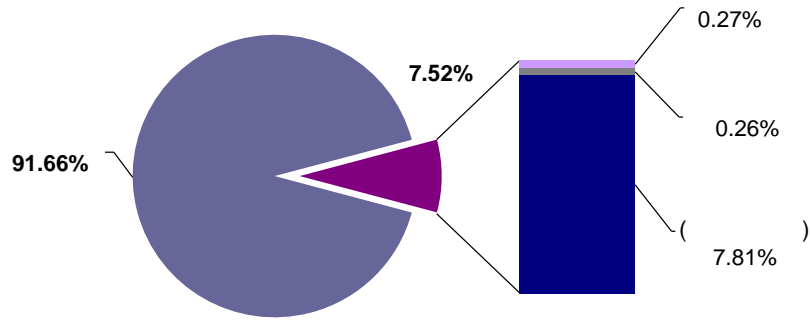
92.28% 93.63%, 3- - 7.11% 7.81%.

92.29% 91.66% ( . 8, 9).



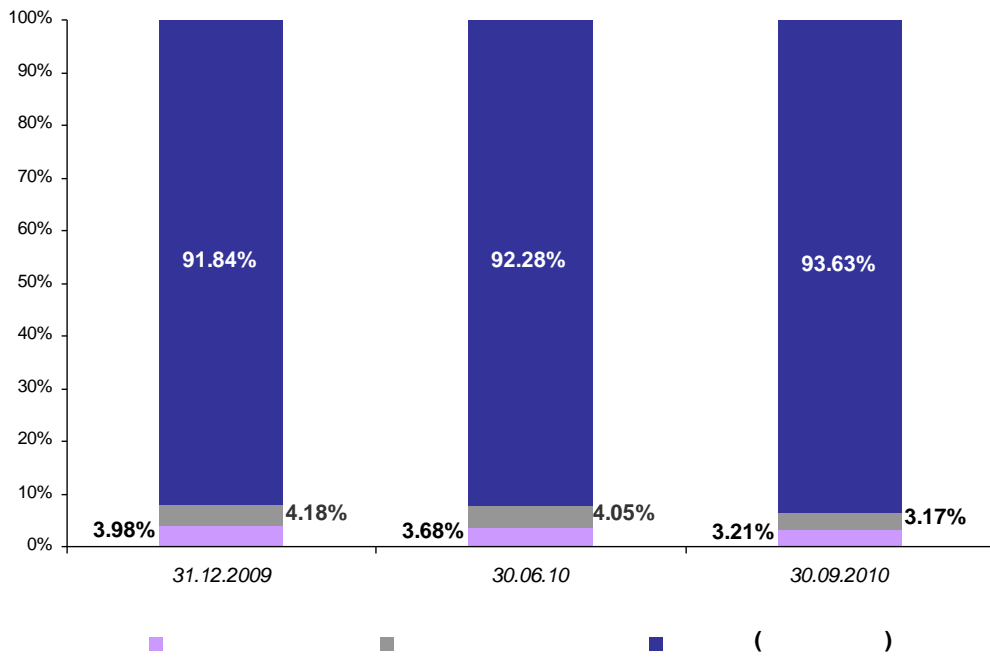


(3 2010 )



. 8.

30.09.2010 .



. 9.

3

2010

**5.**

- 2010 .

2-

, 3-

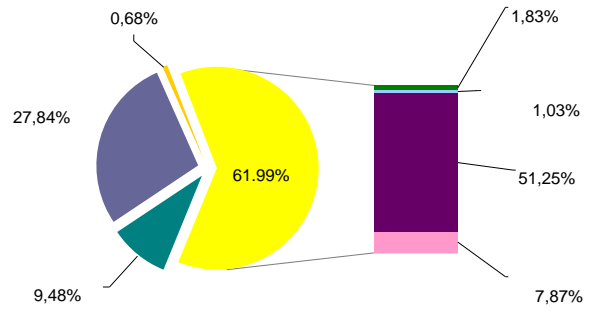
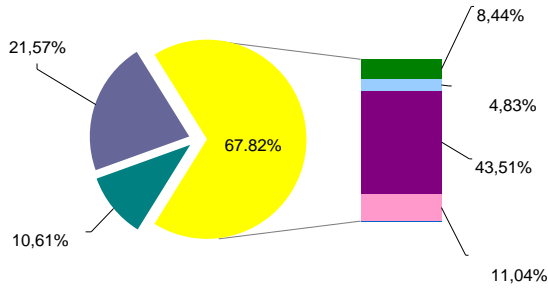
3-

30.09.2010



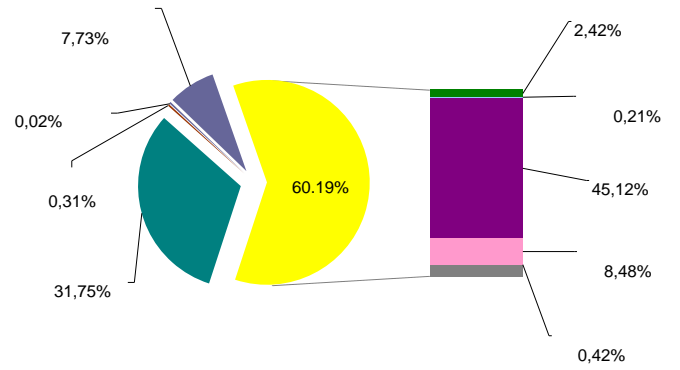
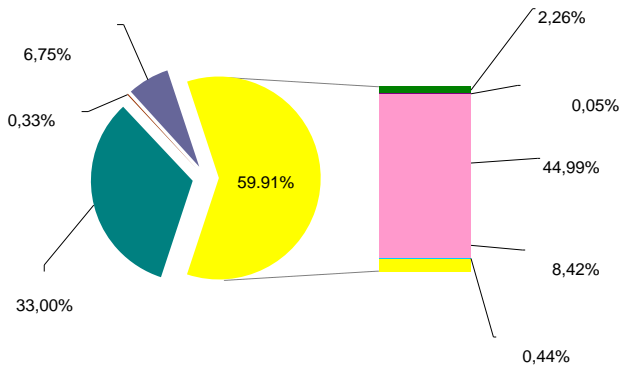


(3 2010 )



( )

( )



. 10.

30.09.2010 .

3-

- « » ( , , ) – 13.59% 33.00%;
  - – 1.28% 2.26%;
  - « » – 3.20% 3.75%;
  - – 59.31% 44.99%;
  - – 10.89% 6.75%;
  - – 10.84% 8.42%;
- (+200.64%), ( 30.09.2010 – 0.33%),

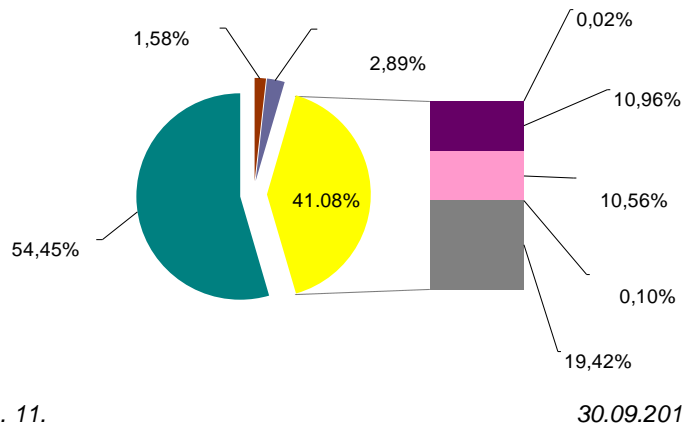
3 2010 ,

2-



(3 2010 )

30.09.2010,  
3-  
« » (54.45%),  
« » (19.42% 30.28%),  
( 10.96% 10.56% 19.51% 18.98% 2- ) ( . 11).  
4.73% 2.89%.



3- 2010  
( , ( . 5).

30.09.2010 .

1	" - "	416
2	" "	299
3	" "	267
4	" - "	256
5	" "	224
6	" - "	169
7	" i i "	147
8	'	144
9	" "	139
10	" " "	136

30.09.2010 " " (88 ) ( . 6),  
" " " (85 ), 3- " " (79  
)  
20- , 78 , -  
-10 30.09.2010 9- , 6 1-  
2- 1- ; 1 - 2- , 2- ; 7  
1-2- « » , -

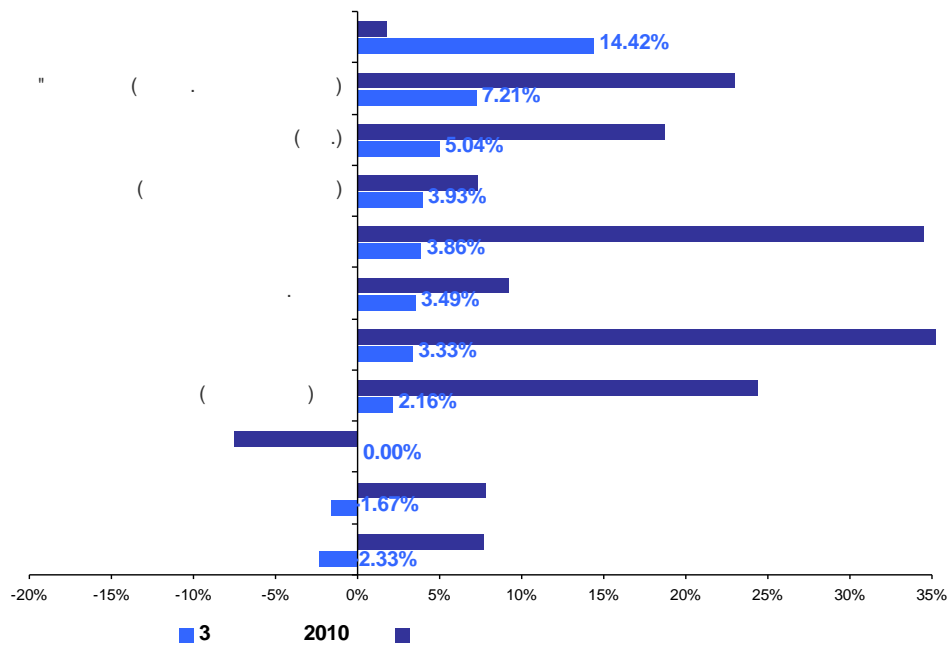






6.

« » 3- 2010  
 ( . 12). « » 2-  
 (-20%), 3- 3-4%,  
 « » « » : ,  
 , .  
 , 2.33%<sup>1</sup> ( 2-  
 , 2/3  
 - -10.32%).  
 - , 2  
 . 2- , 1.11%.  
 , 2- ,  
 : -77% +134%.  
 3- - +2.16%.  
 3-  
 , - -1.67%.  
 3-  
 - 2.16% ( 2- - 4.32%).  
 3- (+1.80%) (+14,42%),  
 3- « », 1 (-7.46%).  
 9 2010  
 +7.64%, - +7.81%, - +24.38%.  
 ,  
 2010 , 30.09.10,  
 - (+23.04%).



. 12.

3 2010 2

<sup>1</sup> 3- 2010.  
<sup>2</sup> 1-3 . 2010 (31 , 40 , 165 ).  
 ( : <http://www.blagovest.ua>).



(3 2010 )

7.

3- 2010  
 (80.90%),  
 4.98% (60.14%).  
 ( . 11).  
 30.09.2010  
 2-  
 (-10.47 . ).  
 7.4 . .,  
 - 0.41 . . 0.71%.  
 (-4.93 . .),  
 (20.63%).  
 (-2.88 . .),  
 15.14%.  
 3-  
 (55.01%),  
 24.26 . .  
 (-18.47 . . 40.01%).  
 (4.89%),  
 -5.77 . . 2-  
 3- 4.92 . . 62.36%,  
 ( . . ).  
 -1.77 . . 9.15%.  
 -3.33 . . 28.19%,  
 ( . . )  
 30.09.2010  
 82.78%, -0.95 . . ,  
 ( . . )  
 - 1.11 . . 16.32%,  
 0.16 . . 0.89%. ,  
 3.33% (-0.21%).

11.

30.09.2010 ., %

	15.14%	20.63%	63.53%	0.71%
	40.01%	4.89%	55.01%	0.09%
( )	62.36%	9.15%	28.19%	0.30%
( )	<b>60.14%</b>	<b>9.38%</b>	<b>30.17%</b>	<b>0.31%</b>
	82.78%	16.32%	0.89%	0.01%
( )	<b>80.90%</b>	<b>15.75%</b>	<b>3.33%</b>	<b>0.03%</b>





(3 2010 )

8.

3- 2010 2-

« ».

3-

3-

10.47 2010 (-2.17% -1.82%),

(-2.33%).

25.75% ( +12.66%) 3- 28.35% ( +14.31%).

3- (+7.21%).

(+3.93%) 4 ,5 36 (+2.33%),

(+2 070.96 . .)

(+10 , +4 ,

).

3- « »

51.25% ).

( 43.51%

).

2-