



(2 2011)

- 1.
- 2.
- 3.
- 4.
- 5.
- 6.
- 7.
- 8.

1.

2- 2011 1- ,

1- ,

4-5

« »

« »

2- 2011 1- -4.04% () 7.23% () .

-5.67% () 4.76%

-8.11% -18.57% (.1, .1).

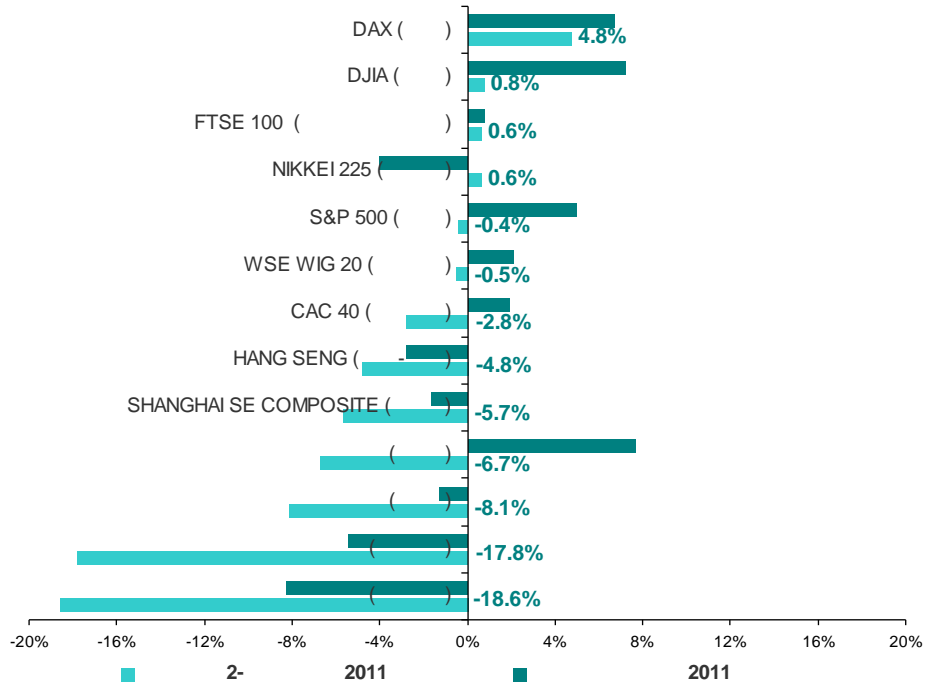
	31.12.2010	31.03.2011	30.06.2011	2-2011	2011
DAX ()	6 914.19	7 041.31	7 376.24	4.76%	6.68%
DJIA ()	11 577.51	12 319.73	12 414.34	0.77%	7.23%
FTSE 100 ()	5 899.94	5 908.76	5 945.71	0.63%	0.78%
NIKKEI 225 ()	10 228.92	9 755.10	9 816.09	0.63%	-4.04%
S&P 500 ()	1 257.64	1 325.83	1 320.64	-0.39%	5.01%
WSE WIG 20 ()	2 744.17	2 816.96	2 802.01	-0.53%	2.11%
CAC 40 ()	3 804.78	3 989.18	3 878.65	-2.77%	1.94%
HANG SENG (-)	23 035.45	23 527.52	22 398.10	-4.80%	-2.77%
SHANGHAI SE COMPOSITE ()	2 808.07	2 928.11	2 762.08	-5.67%	-1.64%
()	1 770.28	2 044.20	1 906.71	-6.73%	7.71%
()	1 687.99	1 813.59	1 666.59	-8.11%	-1.27%
()	2 443.70	2 812.83	2 311.87	-17.81%	-5.39%
()	975.08	1 099.18	895.01	-18.57%	-8.21%

*

Bloomberg



(2 2011)



. 1. * 2- Bloomberg 2011 *

1- 23.2%, 22.7% - 51.5%).

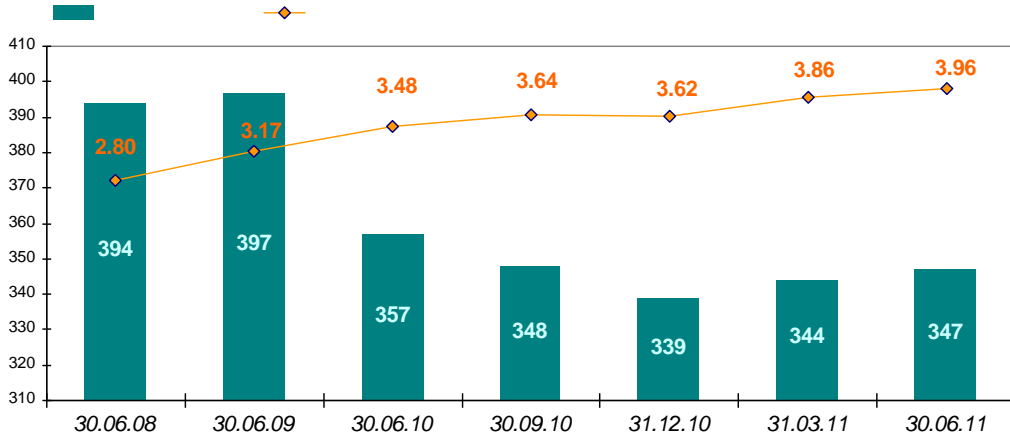
2011 2- -8.21% -5.39% -18.57% () -17.81% (),

2.

, 2- 2011 1- (+3). 30.06.2011 347 (+47), (+102). () 2011 1375 30.06.2011 : y 4 (.2).



(2 2011)



. 2.

(+0.94%) , 72 , 2- 2011 11
 1178 (. 2). (+6,58%) 30.06.2011
 2010 . , 4-

2- . 2011 , 2.

		*	*	*	*	*	*	*	*
31.12.2010	1095	36	48	9	32	755	2	141	72
31.03.2011	1167	40	49	9	33	809	2	134	91
30.06.2011	1178	42	47	9	36	822	2	130	90
2-	0.94%	5.00%	-4.08%	0.00%	9.09%	1.61%	0.00%	-2.99%	-1.10%
2011	7.58%	16.67%	-2.08%	0.00%	12.50%	8.87%	0.00%	-7.80%	25.00%

2- (+9.09%, +3 5), - (+13 , + 1.61%),
 (+5%, +2),
 - (-4.08%, -2),
 - (-1.1%, -1), 5
 : 30.06.2011 197 (1- 3-4- 161).



(2 2011)

3.

2- 2011
 (243, . 3).
 (- 4), -
 69.48% 70.03%.
 - 5.81% 6.05%.
 (-2 , 2.03% 1.44%), -
 344- 347- .
 :
 71.34% 71.77%.
 20, 8.81% 8.26%.
 2-
 2011

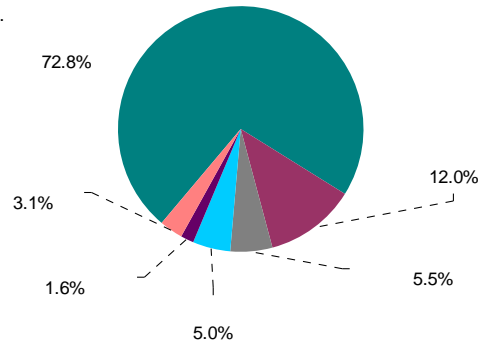
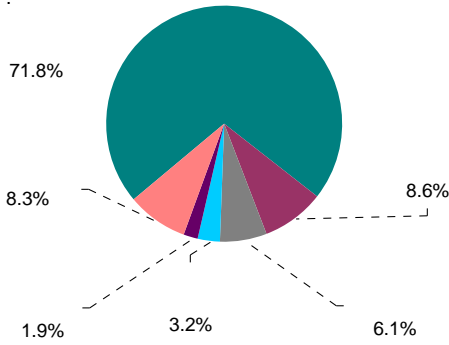


. 3. 30.06.2011 .

(), - 72.55% 72.84% (. 4).
 5.48%). (5.36%
 (12.22% 12.00%).



(2 2011)



4.

30.06.2011

4.

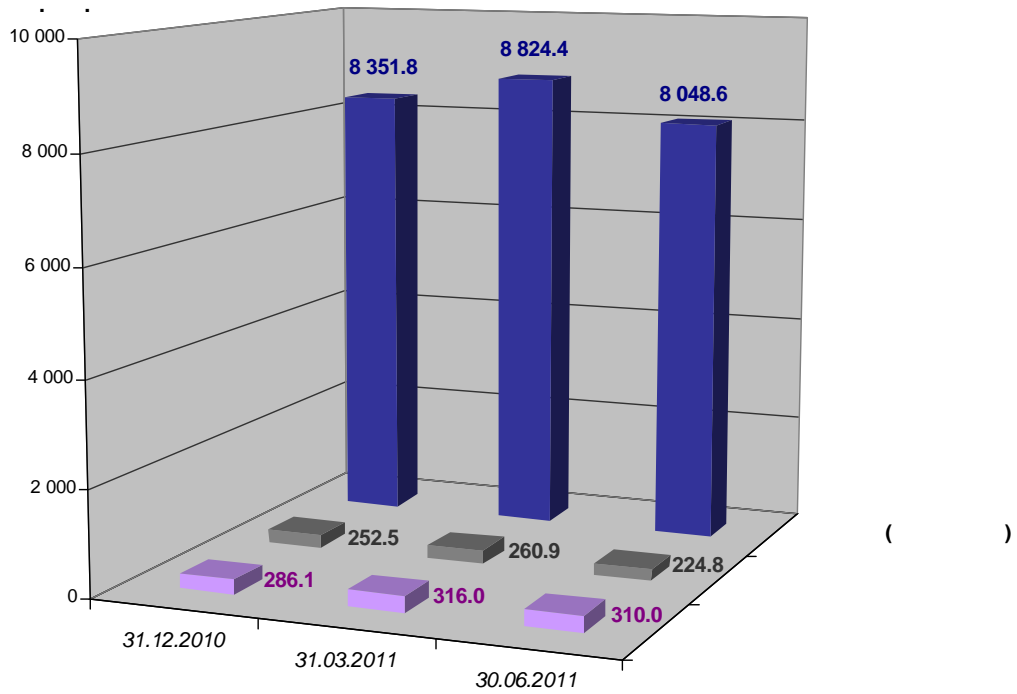
2- 2011-
1- 2-
(+1.37% +7,27%).
1 552.70
30.06.2011
115 110.53
(+2.28%, +2 370.58 . .) 1.5
30.06.2011
8 583.44 . . (. 3). 8.70% (-817.89 . .), « »
(95%)

	31.12.2010	31.03.2011	30.06.2011	2- 2011	2011
	286.07	315.99	310.03	-1.88%	8.38%
	252.53	260.90	224.82	-13.83%	-10.97%
()	8 351.82	8 824.44	8 048.58	-8.79%	-3.63%
()	8 890.41	9 401.32	8 583.44	-8.70%	-3.45%
	96 976.17	104 156.51	106 527.09	2.28%	9.85%
()	105 866.59	113 557.83	115 110.53	1.37%	8.73%

(-1.88%, -5.95 . .),
(2 ,
1.60% 30.06.2011).
18.36 . . (6%),
30.06.2011 315.99 . .
2- 2011
(-13.83%, -36.08 . .). 224.82
,
-775.85 . . (-8.79%),
8 048.58 . . 30.06.2011.
1-



(2 2011)

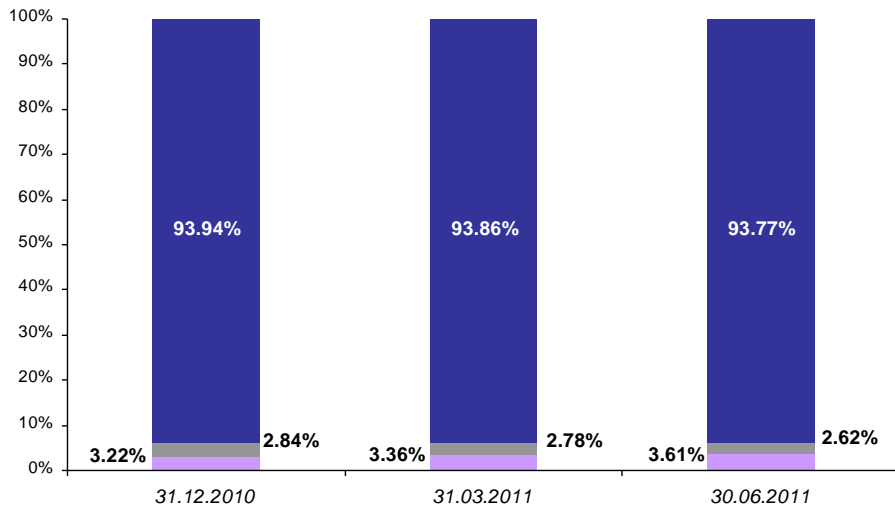


. 5. 1-2- . 2011

2-

2011

2.62% 93.77% 3.36% 3.61%
(. 6).

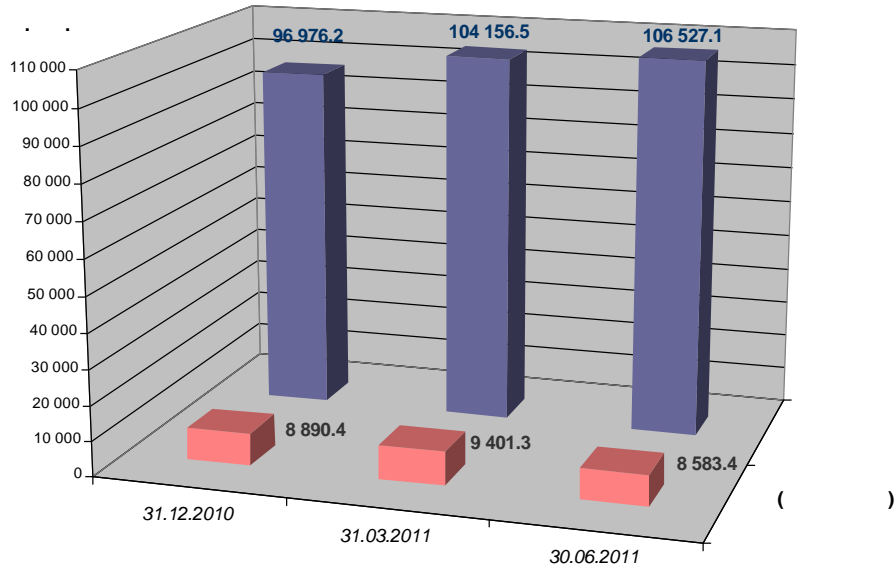


. 6. 1-2- . 2011

(+2 370.58 . ., +2,28%) 30.06.2011
106 527.09 . . - ,
2011 (+9 550.92 . ., + 9.85%),
(+23.96 . ., +8.38%) ,
(+29.91 . .),
(-10.97%, -27.71 . .)

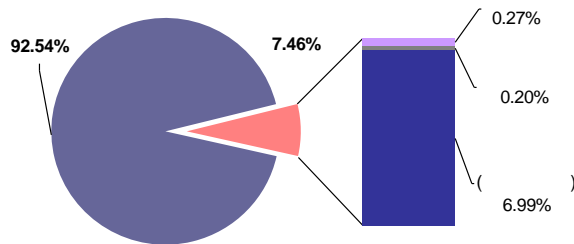


(2 2011)



. 7. 1-2- . 2011

- 2- 91.72% 92.54% (. 8).
- 7.77% 6.99%.



. 8. 30.06.2011 .

- 2011 ,
+8.64%), (+0.11%
305.99 . . .
(-14.04%),
35.90 . . .
2- 219.81 . . .
7 418.10 . . . 30.06.2011,
(-8.06% -7.95%).
650.62 . . .
(-686.18 . . .) 2-
3.15% (+2 926.93 . . .) 95 918.01 . . .
2.21%, , 1-
(+8.76%, +24.65 . . .)
2011
(+10.97%, +9 478.96 . . .)
-10.36% (-25.41 . . .).



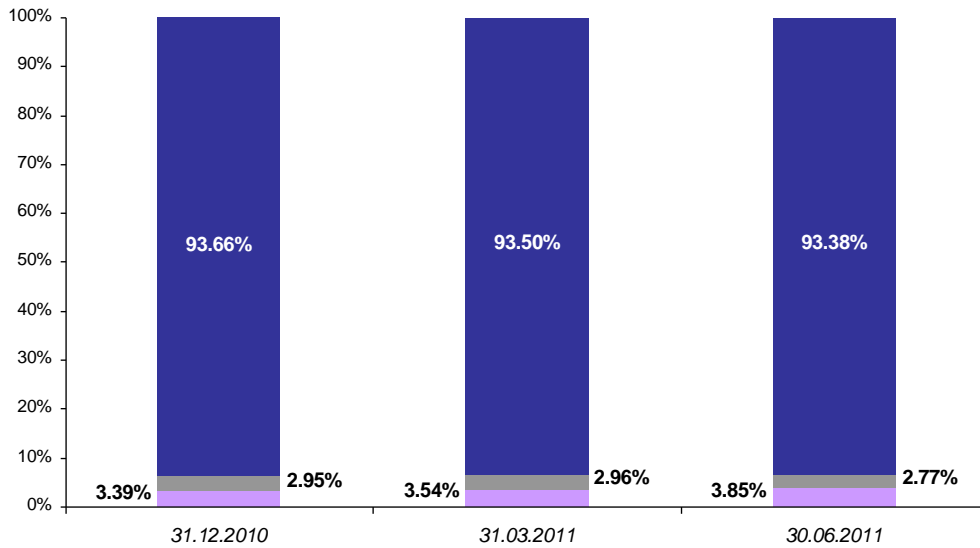
(2 2011)

4.

	31.12.2010	31.03.2011	30.06.2011	2-2011	2011
	281.35	305.65	305.99	0.11%	8.76%
	245.22	255.71	219.81	-14.04%	-10.36%
()	7 775.72	8 068.72	7 418.10	-8.06%	-4.60%
	8 302.29	8 630.09	7 943.91	-7.95%	-4.32%
	86 439.05	92 991.08	95 918.01	3.15%	10.97%
()	94 741.33	101 621.17	103 861.92	2.21%	9.63%

2-

2.77%) , , , 3.54% 3.85%, (93.38%

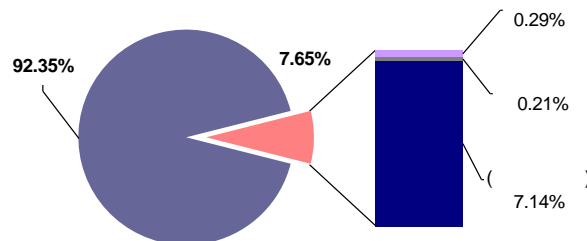


. 9.

1-2- . 2011

7.14%).

(91.51% 92.35% - 0.25% 0.21% (. 10). 7.94%



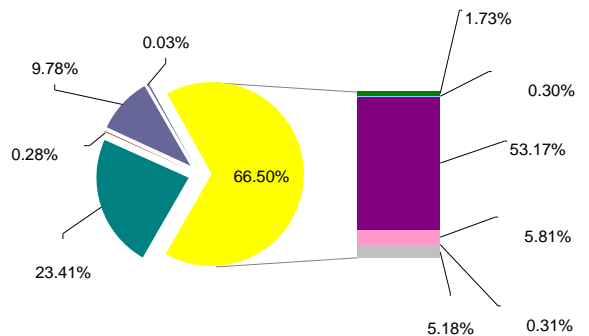
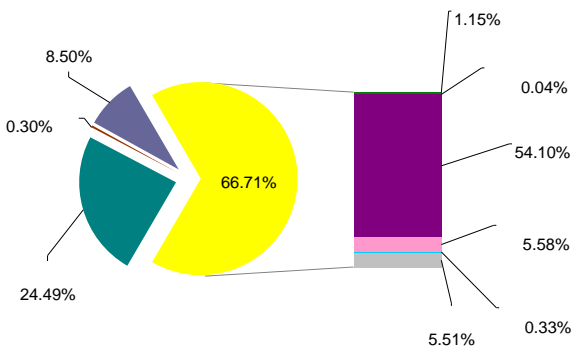
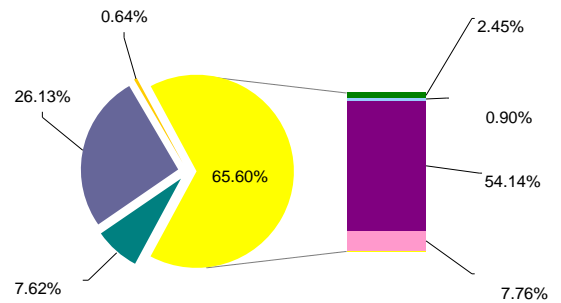
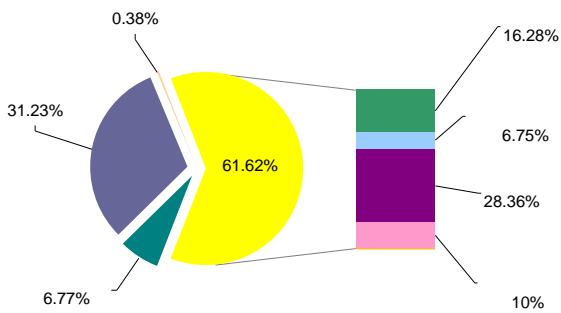
. 10.

30.06.2011 .



5.

1.65-2.14 . . . , (. 11).
 68.51% 66.50%
 (71.61% 1-).
 790.28 . . . (1- 200 . . .),
 701.30 . . . , (55.51% 53.17%).
 34.93%
 33.28% (35.28% 1-)
 822.67 . . .
 296.01 . . .
 (. 12).
 1- . . . , 2- c
 (. . .)
 1.15% 16.28% 0.02%



. 11.

30.06.2011 .



(2 2011)

2-

2011

- - 13.27% 16.28%;
- - 29.52% 31.23%;
- - 5.22% 6.75%;
- - 8.79% 10.24%;

- - 36.47% 28.36% (, 1- 2010 - 52.10%).

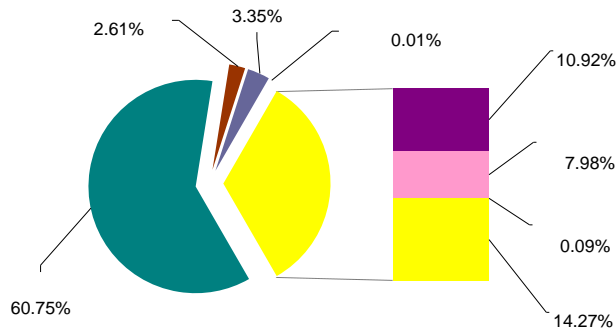
- - 1.41% 2.45% (, - 4.86%);
- « » - 5.74% 7.62% (1-);
- - 57.35% 54.14%.

- « » - 23.62% 24.49%;
- - 7.39% 8.50%;
- - 0.85% 1.15%;
- « » - 4.51% 5.51%;
- - 56.14% 54.10%;
- - 6.76% 5.58%.

, , 2- 2011
 1- « » , - , - (6.72% 6.77%).
 , (26.04% 26.13%).

2- (. 12)

« » « » .



. 12.

30.06.2011 .



(2 2011)

« »
1- (+3 014.57 .).

- « » – 59.42% 60.75%;
- – 3.28% 3.35%;
- – 2.36%; 2.61%
- – 8.67% 7.98%;
- « » – 15.24% 14.27%.

(10.92%).

2- 2011

« »

2-

16 372.18 . ,
(38.93% 39.12%).
(15 431.20 .),
(36.50% 36.87%) (. 5).

5.

30.06.2011 .

i	16 372 182 526	39.12%
	15 431 202 471	36.87%
	9 071 943 414	21.67%
	511 678 202	1.22%
	298 454 663	0.71%
	121 900 000	0.29%
	35 780 913	0.09%
	11 482 173	0.03%
	41 854 624 363	100.00%

2- 2011
(4 567.41 .),
(81.07% 79.95%) (. 6).

6.

30.06.2011 .

i	4 567 413 192	79.95%
	498 953 391	8.73%
	444 268 922	7.78%
	148 334 924	2.60%
	26 900 000	0.47%
	26 050 276	0.46%
	791 785	0.01%
	5 712 712 490	100.00%



(2 2011)

2011 , (, - 213 , - 11, - 11) (.7). -10 " (15- , 115) " - "(11- , 115). " (5- , 185 " ") . (10 , 152). 7.

30.06.2011 .

1	" - "	366
2	" i "	296
3	" " "	219
4	'	213
5	" " "	185
6	" . "	184
7	" " "	168
8	" - "	157
9 i	" " " "	154
10 i	" " " "	152

30.06.2011 , (.8), - 1 , - 3) . 2- 3- - 101 , « « « » (86 , -1) . -10 2- « » (12- , 58) « » (14- , 49) , « i i » (10- , 61) . 8.

30.06.2011 .

1	'	101
2 i	" " " "	89
3 i	" " " "	86
4 i	" - " "	79
5 i	" i i i "	70
6 i	" " "	66
7 i	" . "	64
8 i	" i i i "	63
9 i	" " "	62
10 i	" i i i "	61

1- , 2- 1-2- 2011 . -10 " " 16- 19- 12-



(2 2011)

2-

2011
-10
3-
(-7 . .)
(1- . .)
9-
« » (778.90 . .),
35- (7 . .)
4- . .
) « » (408.88 . .),
(-25.30%).

« » (1 291.40 . .),
2-
« » (916.13 . .),
5- (2- . .).
« » (544.11 . .),
« » (538.78 . .),
-10 « » (464.32 . .), 11

30.06.2011 .

9.

1	i	" " "	1 291 403 400
2		" "	916 133 000
3	i	" "	778 899 265
4		" 2008"	744 087 207
5		" - "	614 801 782
6	i	" " "	583 989 722
7		" - "	546 272 460
8	i	" "	544 108 267
9		" "	538 777 100
10	i	" "	526 313 933

2-

« » (1 198.61 . . , . 10).
« » (202.98 . .).
" - " "
(164.86 . .),
10 2-
(. .), 5- 1- , 2-
7 . . (127.10 . .),
- 27 . . (148.33 . .).
, - 2011

10 2 500.36 . . 2 449.88 . .

30.06.2011 .

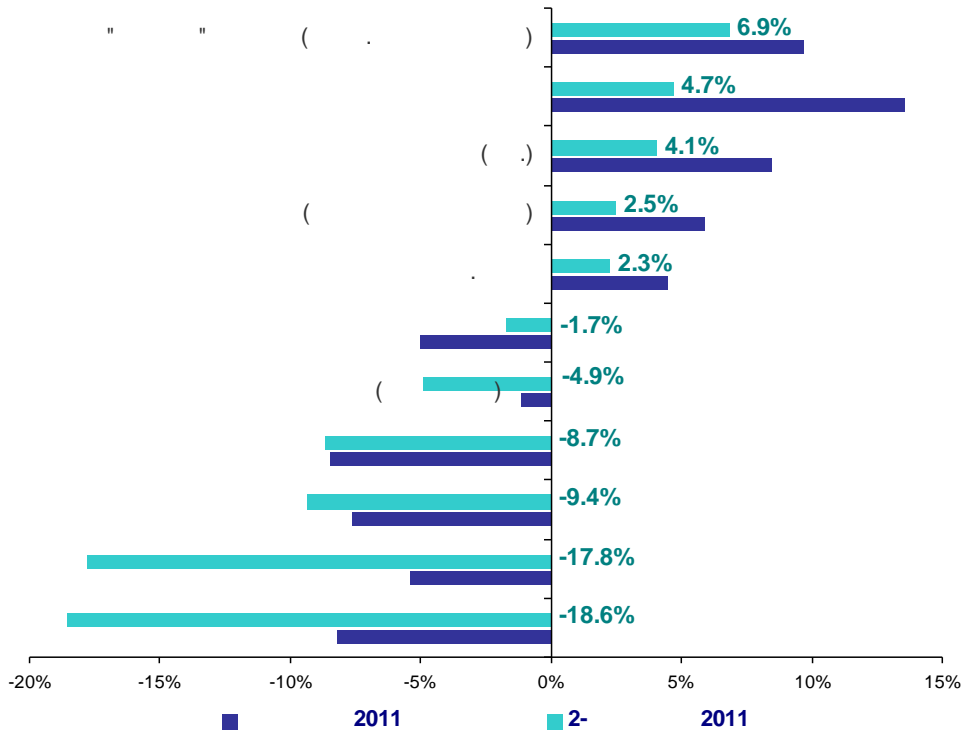
10.

1	i	" " "	1 198 612 200
2	i	" "	202 976 785
3	i	" - "	164 860 535
4		" - "	162 585 774
5	i	" "	135 760 067
6	i	" 11"	134 988 427
7		" "	127 101 805
8	i	" " "	115 126 221
9	i	" "	108 167 073
10	i	" G" (" ")	99 700 000



6.

2- 2011 , 1- ,
 -9.4% () -4.9% (),
 -8.7% ,
 (+6.9%). , , ,
 +4.7%,
 (+4.1%) (. 13).
 7 38- , 4 40- , 40 145-
 36- 38-) 11 . . (+2.0% -9.4%).
 -22.1% +7.7% (30 . .),
 , 1- ,
 -44.08% +8.98%,
 (53 . .), 1- ,
 -8.7%, 9 . . .
 - -39.2% +48.0% (87 . .). 9 . .
 (-4.9%).
 -18%



. 13. 2- 2011 1

1 , 40- , 145-) 1- . (36- , 41- , 148-) 2 . 2011 (38- 2011 .
 (: <http://www.blagovest.ua>).



(2 2011)

7.

2- 2011
0.14 . . (82.23% 82.09%
)
5.57 . . (65.97% 60.41%) (. 11).
(14.44%
14.27%) 3.43% 14.74%
30.06.2011
(61.38% 62.35%),
3.20 . .).
23.32% 25.21%,
2011 1-
5.87 . . , 18.36 . .
(1- - 11.55 . .).
2011 - 1.76% 0.81% 13.54% 11.63%
30.06.2011
50.58% 51.66%,
(54.57%).
(42.97% 44.91%).
- 6.20% 3.34% - 0.24% 0.09%.
2- 2011 - 68.29% 62.32%,
(23.65%
29.14%). 0.19%.
2- 2011
(83.76% 83.88%).
- 1.22% 1.38%.
14.99% 14.71%,
2-
30.06.2011 31.04%, - 3.64%.

11.

30.06.2011 .,

	25.21%	11.63%	62.35%	0.81%
	44.91%	3.34%	51.66%	0.09%
()	62.32%	8.33%	29.14%	0.21%
()	60.41%	8.32%	31.04%	0.23%
	83.88%	14.71%	1.38%	0.04%
()	82.09%	14.22%	3.64%	0.05%

