



1.1
 2.2
 3.4
 4. , , /5
 5.7
 6.9
 7.12
 8.13

1.

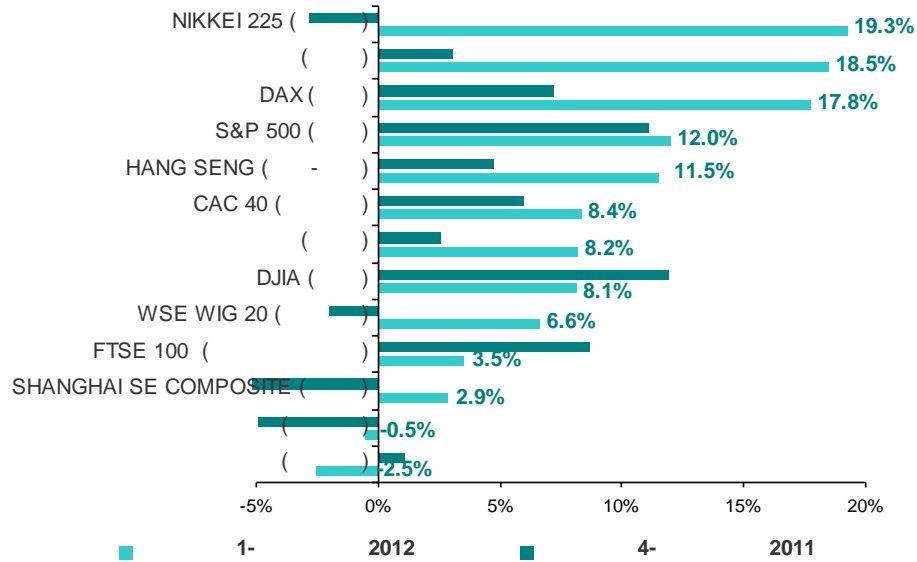
2012

2012 , 4- 2011- 0.3%, 1-
 2012
 - 2012 +2.9-3.5%
 +18.5-19.3%
 , 1- 2012 , (-0.5-2.5%) (.1, .1).

1.

	31.12.2011	31.03.2012	4-2011	1-2012	*
NIKKEI 225 ()	8 455.35	10 083.56	-2.82%	19.26%	3.37%
()	1 381.87	1 637.73	3.04%	18.52%	-19.88%
DAX ()	5 898.35	6 946.83	7.20%	17.78%	-1.34%
S&P 500 ()	1 257.60	1 408.47	11.15%	12.00%	6.23%
HANG SENG ()	18 434.39	20 555.58	4.79%	11.51%	-12.63%
CAC 40 ()	3 159.81	3 423.81	5.96%	8.35%	-14.17%
()	1 402.23	1 517.34	2.61%	8.21%	-16.34%
DJIA ()	12 217.56	13 212.04	11.95%	8.14%	7.24%
WSE WIG 20 ()	2 144.48	2 286.53	-2.02%	6.62%	-18.83%
FTSE 100 ()	5 572.28	5 768.45	8.65%	3.52%	-2.37%
SHANGHAI SE COMPOSITE ()	2 199.42	2 262.79	-6.77%	2.88%	-22.72%
()	534.43	531.64	-4.96%	-0.52%	-51.63%
()	1 458.87	1 421.93	1.12%	-2.53%	-49.45%

* Bloomberg



1. Bloomberg

2011, 1- 2012- 4- 2011 . *

(), , 4-

2011, 1- 2012- 5 15-

20-

1- 1 209 . , (601 .),

- 1 446 20 . . (+/-8%

+/-12%).

41%, - 39% 3 857.8 . . (. . - 39.5%

3 316.3 . . , - 37.0% 486.4 . .). (-26.7%

16.3%

25.6 . .).

2.5 21 556.3 . . ,

4.5 -

192.1 . . . 1-

- 3 (17 265.9

. .). 38.6% 69.0 . .

2.

4- 2011 , 2012 ,

(+3) 31.03.2012 344 (. 2).

6 , 3,

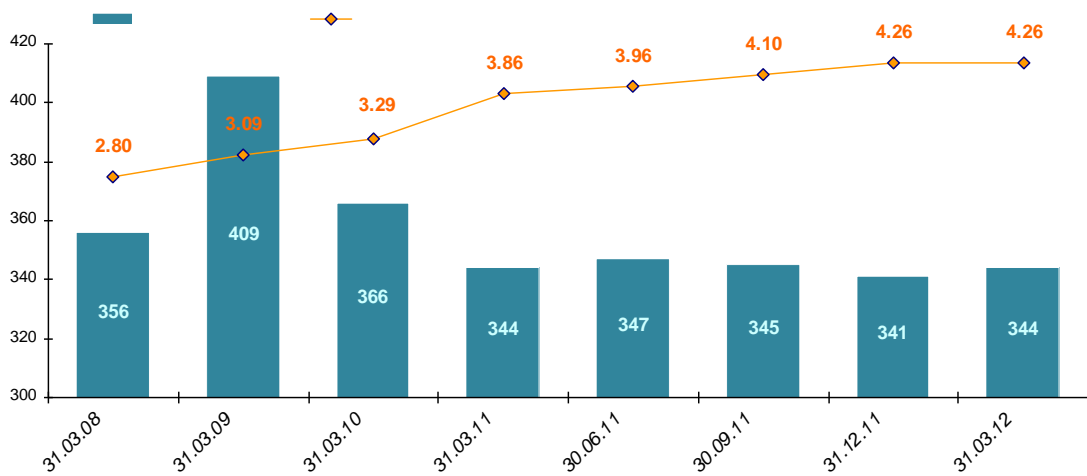
31.03.2012 1464 . (+13

+36 4- 2011).

- 4.26.



(1- 2012)



. 2. 1 . 2008-2012 .

1- 2012

1- ,
4- 2011), 31.03.2012 . - 33 (-81 , 1158,
(. 2).

2.

	1- . 2012					4- . 2011				
	*	*	*	*	*	*	*	*	*	*
31.03.2011	1167	40	49	9	33	809	2	134	91	
30.09.2011	1206	43	47	10	39	844	2	127	94	
31.12.2011	1125	43	40	10	35	772	2	128	95	
31.03.2012	1158	42	38	13	39	791	2	124	109	
4- 2011	-6.72%	0.00%	-14.89%	0.00%	-10.26%	-8.53%	0.00%	0.79%	1.06%	
1- 2012	2.93%	-2.33%	-5.00%	30.00%	11.43%	2.46%	0.00%	-3.13%	14.74%	
	-0.77%	5.00%	-22.45%	44.44%	18.18%	-2.22%	0.00%	-7.46%	19.78%	

1- 2012 .
(+2.5% +14.7%, , +33),
(- +30.0%, - +11.4%, +7).
(-2 , -5.0%),
(-1 , -2.3%) (-4
, -3.1%).
1- 2 ,
31.03.2012 13- 14- . 1 2012 ,
, 1- , - 175- 111- .



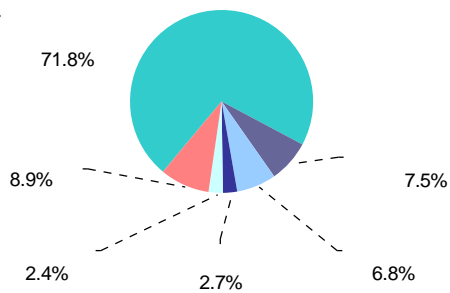
3.

31.03.2012 244 (.3).
 - 70.7% 70.93%.

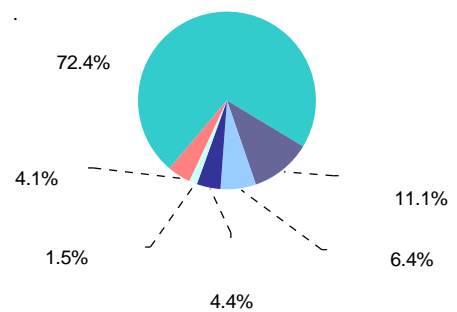


. 3. 31.03.2012 .

1- 70.4%
 71.8% 6.5% 6.8% (.4).
 -5 8.3% 7.5%.
 1 . . . 3- 2011 (72.4%).
 (6.7% 6.5%).
 10.0% 11.1%, 4-



. 4.

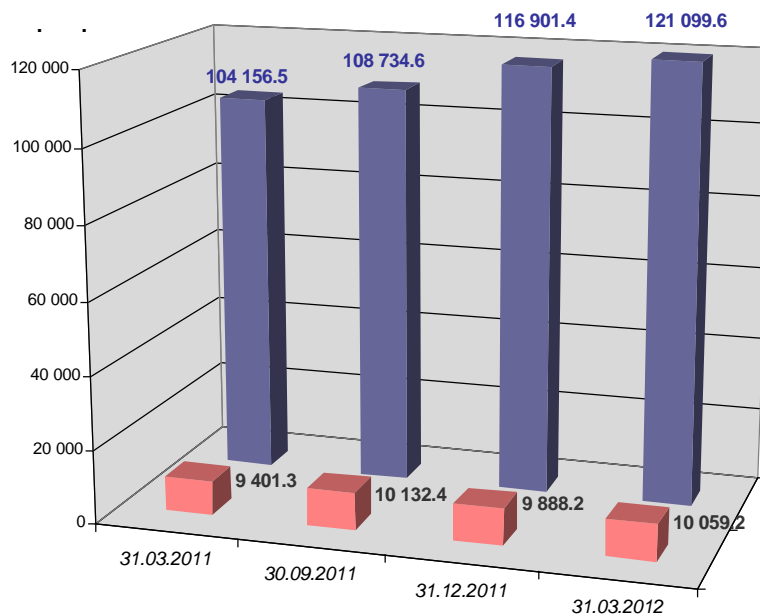


31.03.2012 .



4.

1- 2012 31.03.2012
 131 158.81 (+4 369.21, +3.5%),
 - 121 099.63 (+4 198.23, +3.6%) (. 5).
 2012- 9 664.19 2011 192.27
 1- 8
 - 1



. 5. 1- . 2012, 4- . 2011 .

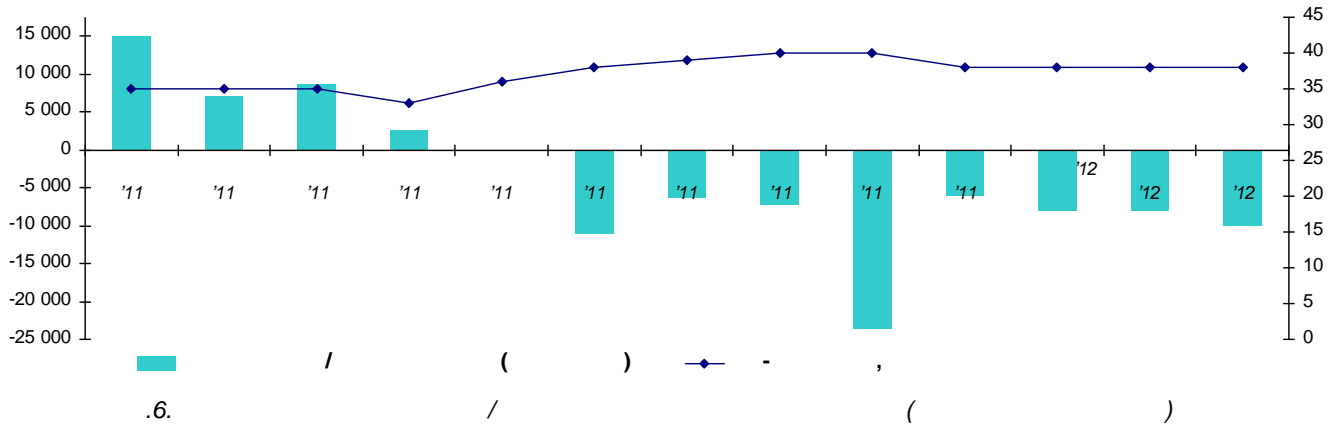
1- 31.03.2012 114 301.30
 (+1 610.23, +1.4%), - 104 928.54 (+1 271.63, +1.2%).
 2012
 206.40 (-20.61, -9.1%).
 179.27 (-2.58, -1.4%).
 9 372.76 (+338.60, +3.8%) (. 3).

3.

	31.03.2011	30.09.2011	31.12.2011	31.03.2012	4- 2011	1- 2012	
	305.65	263.72	227.01	206.40	-13.92%	-9.08%	-32.47%
	255.71	188.42	181.85	179.27	-3.49%	-1.42%	-29.89%
	8 068.72	9 013.74	8 625.30	8 987.08	-4.31%	4.19%	11.38%
	8 630.09	9 465.88	9 034.16	9 372.76	-4.56%	3.75%	8.61%
	92 991.08	94 821.97	103 656.91	104 928.54	9.32%	1.23%	12.84%
()	101 621.17	104 287.85	112 691.07	114 301.30	8.06%	1.43%	12.48%

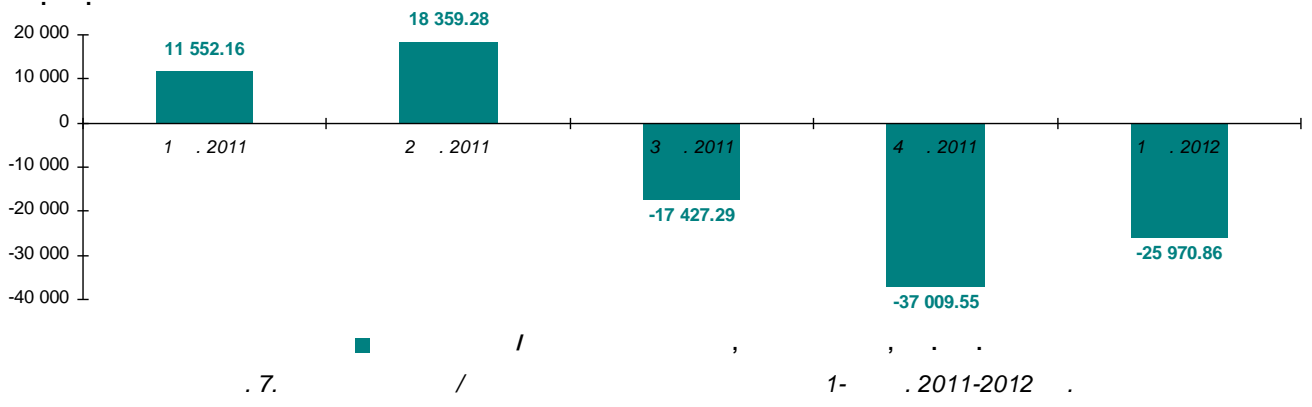


1- 2012
 25.97
 10
 50%-70%
 (7-
 (.6, .4).



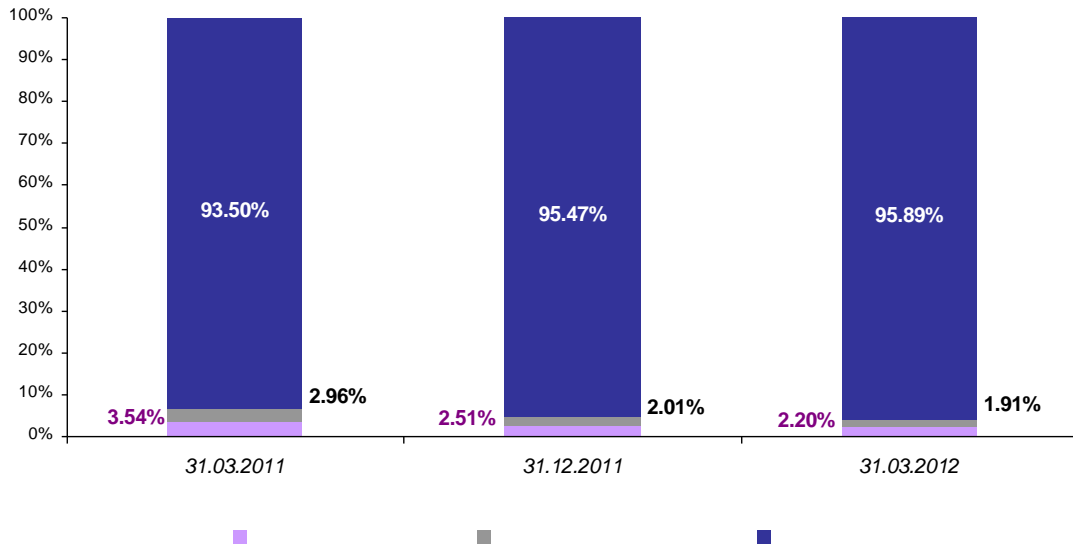
2011-2012		
'11	15 090.60	35
'11	7 172.00	35
'11	8 682.43	35
'11	2 504.86	33
'11	-43.50	36
'11	-11 040.64	38
'11	-6 343.15	39
'11	-7 217.03	40
'11	-23 654.55	40
'11	-6 137.97	38
'12	-7 987.14	38
'12	-7 951.99	38
'12	-10 031.73	38

2011- 2012
 24-25%.
 62
 2011 (.7),



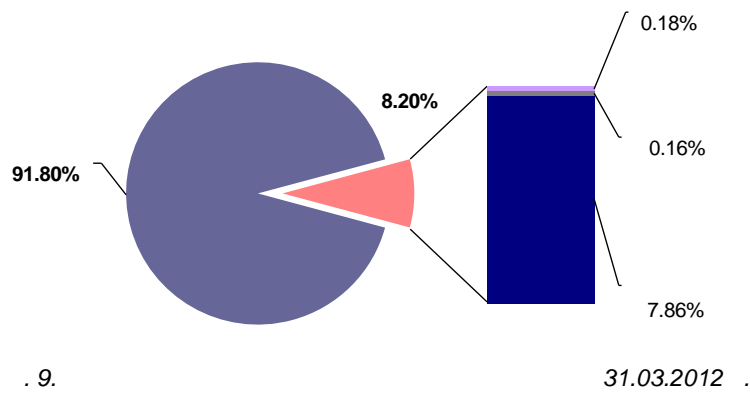


4- 2011 , 1- 2012- , , 2.5%
 2.2%.
 2.0% 1.9% - - 95.5% 95.9%.
 2.4 . . , -
 (. 8).



. 8. 1- . 2012 4- . 2011 .

1- , (92.0% 91.8%)
 (+4.2% +1.2%).
 7.7% 7.9%.



. 9. 31.03.2012 .

5.

1- 2012 ,
 (81.0% 81.4%) (. 11).



(1- 2012)

4.2% 3.5%,
 - 26.0% 24.3%.
 2012
 () - 14.8% 15.2%

11.

31.03.2012 ..				
	35.49%	14.53%	49.70%	0.28%
	50.15%	2.12%	47.67%	0.07%
()	66.87%	9.77%	23.23%	0.13%
()	65.86%	9.73%	24.28%	0.13%
	82.75%	15.50%	1.60%	0.15%
()	81.36%	15.03%	3.46%	0.15%

1- 2012

50.4% 49.7%.

11.9

4- 3- 2011

7.6

35.6% 35.5%.

13.9% 14.8%.

2012

2011

2.4 . .).

- 48.4% 50.2%.
 (

47.7%, -3.8 . .).

(49.4%

1- 2012

366.1

65.4% 66.9%.

55.7

24.9% 23.2%,

- 53.3 . ., 9.6%

9.8%.

9.5% 9.7%.

82.5% 82.8%

3- 2011

1 331.6

509.7

15.2% 15.5%.

(-704.6 . .),

2.3% 1.6%.



1- 2012

6.

1- 2012

61.5%

69.8%

1.4-1.8
- 61.7% (.10).

- 2.44

- 9.39

193.14

(-36.17 . .)

« »¹ (-152.46 . .),
(47.6% 46.8%).

(-4.35 . .),

2.50 117.02 . .

4-

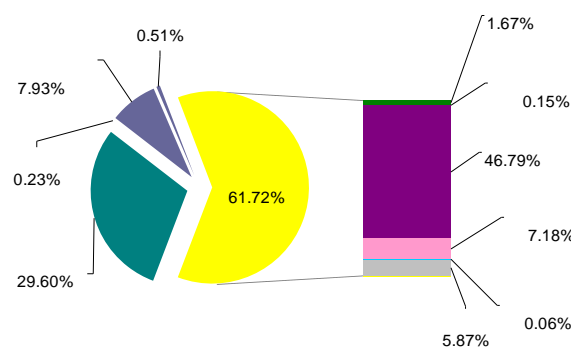
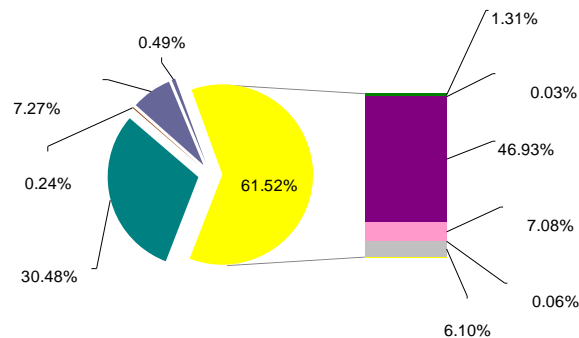
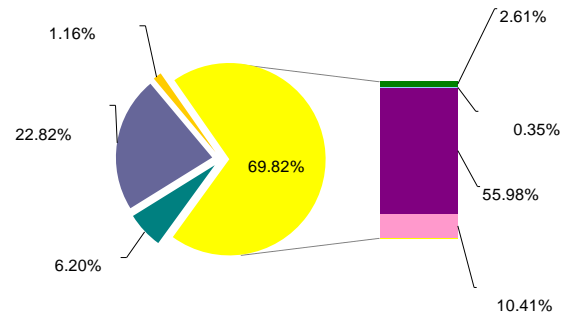
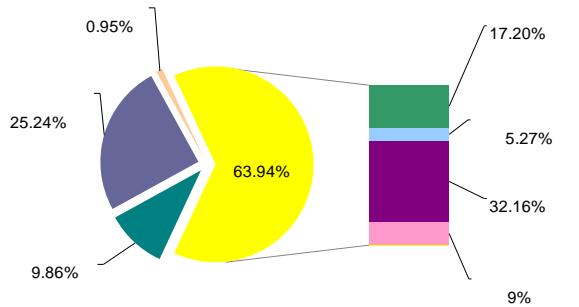
2011

(+58.90 . .).

(-12.83 . .),

»

«



. 10.

31.03.2012 .

¹ « »

(. .) . .



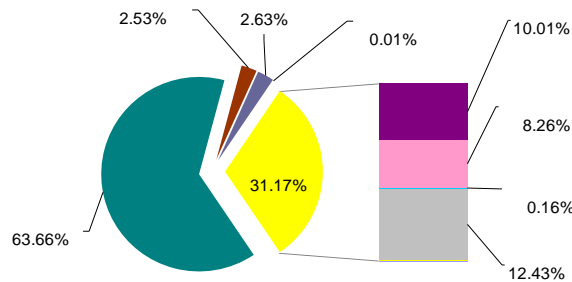
:

- - 29.6% 32.2%;
- « » - 8.2% 9.9%;
- - 0.7% 1.0%;
- :
- - 28.6% 25.2%;
- - 10.4% 9.3%;
- - 5.4% 5.3%;
- :
- - 9.0% 10.4%;
- - 55.8% 56.0%;
- - 0.2% 0.4%;
- :
- « » - 7.7% 6.2%;
- - 23.1% 22.8%;
- ()
- :
- - 5.9% 7.1%;
- - 0.7% 1.3%;
- - 6.7% 7.3%;
- « » ² - 5.6% 6.1%, . . - 5.6% 6.1%;
- :
- « » - 32.4% 30.5%;
- - 47.8% 46.9%.

1- 2012

31.2% (. 11), (-0.1 . . -3.8 . . 4- 2011) - 1 233.84 . .

« » (+3 669.10 . .), (. . 1 . .).



. 11.

31.03.2012 .

² « » - , , (. .).



- « » – 62.6% 63.7%;
- – 8.0% 8.3%;
- – 3.6% 2.6%;
- « » – 13.0% 12.7%;
- – 10.1% 10.0%.

1- 2012
31.03.2012 (-68.61 . .) 17 445.48 . .,
39.5% 38.5%) (. 5).

1- 16 535.94 . . (+213.63 . .),
36.5% (36.8%).
(+765.97 . .),
23.3%.

5.

31.03.2012 .

	17 445 481 423	38.53%
i	16 535 943 874	36.52%
	10 549 613 100	23.30%
	347 506 214	0.77%
	197 887 500	0.44%
	180 301 669	0.40%
	16 665 219	0.04%
	5 097 810	0.01%
	45 278 496 810	100.00%

31.03.2012
4 707.55 . . (-36.24 . .).
(. 6).
78.9% 75.8%
10.1% 11.6%
(+115.17 . .)

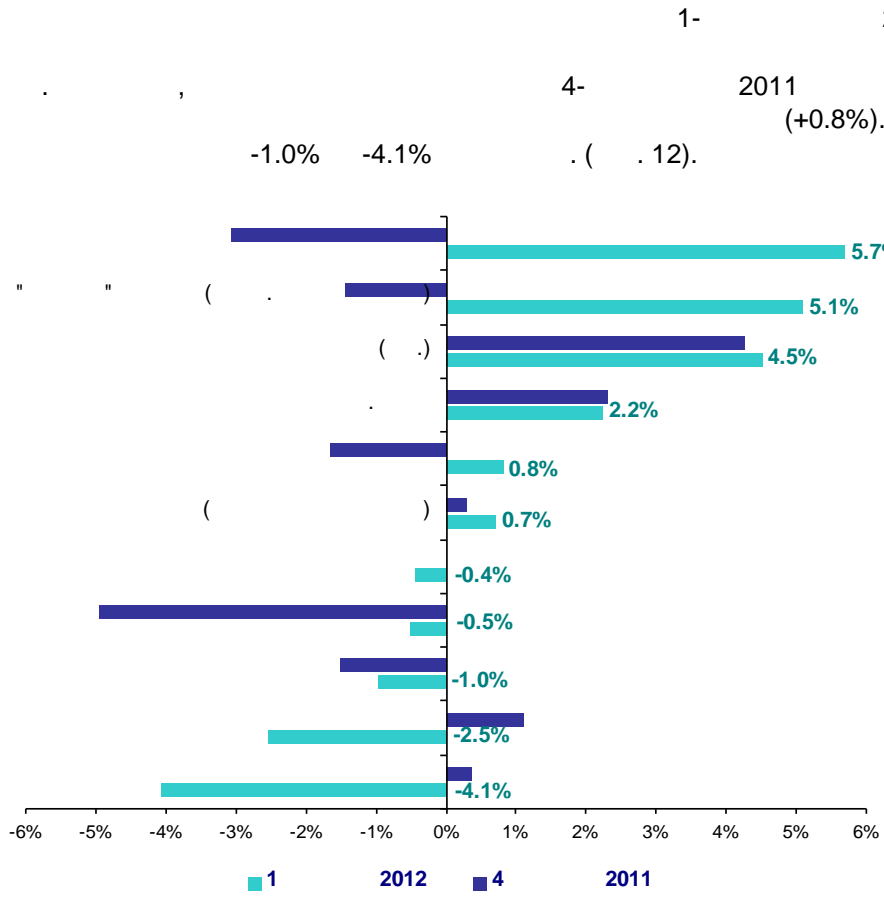
6.

31.03.2012 .

i	4 707 549 644	75.81%
	722 692 532	11.64%
	590 058 819	9.50%
	167 578 804	2.70%
	14 959 034	0.24%
	5 887 500	0.09%
	807 775	0.01%
	6 209 534 108	100.00%



7.



. 12.

1- . 2012 4- . 2012 .³

11-) 52- 144- (20- 59- 34- (13- 36-) 29- 40- ()

+13.4% , -35.2% +7.1% , -55.6% +9.2% : -32.8%

(+5.1%). 1-

(+5.7%), 4-

(+4.5% +2.2%), 4 1

, 20 -

(3%).

³ 40- , 36- (, 140- 1- . 2012 40- , 34- , 144- 4- . 2011

2012 () .

(: <http://www.blagovist.ua>).



8.

2011 ,
 1- 2012 ,

(UCITS) , 91 (

50 (49) . 9

1- 2012

« » ,

2008

) - , (

(+3.5% 1.4% +6.7%

8.1%) .

31.03.2012 131 159 , -

114 301 , 91.8% - 1- 1.5

26 ,

21 , (-9.1%).

1- 2012 -

4- 2011 -

() « » (, ,

).

1- , ,

+0.8%

27.5% 72.5% ,

-1.0% -4.1% , 60%

36%

⁴ . [European Quarterly Statistics \(Q1 2012 - Quarterly Statistical Release\) by EFAMA](#)